

# Gtech

## Cordless Hedge Trimmer

Model number: HT20

### OPERATING MANUAL

ORIGINAL INSTRUCTIONS

# IMPORTANT SAFEGUARDS:



**IMPORTANT: READ ALL INSTRUCTIONS BEFORE USE.  
RETAIN INSTRUCTIONS FOR FUTURE REFERENCE.**



Do not use in rain or leave outdoors whilst raining.



**WARNING:** Basic safety precautions should always be observed when using an electrical appliance to reduce the risk of fire, electrical shock or serious injury.

## Personal Safety:

- Only use the trimmer in the manner intended and for trimming hedges as described in this manual.
- Keep out of reach of children and animals at all times.
- Only use in daylight or good artificial light.
- Always be sure of your footing on ladders, slopes or in slippery conditions.
- Do not over-reach or use on excessive steep slopes.
- Check the hedge and area where the trimmer is being used for any objects, such as wire fences, that could damage or jam the trimmer blade.
- Pay special attention to the hazards posed to third parties by the reach working radius.
- Stay alert, watch what you are doing and use common sense when operating a power tool.
- Do not use power tools while you are tired or under the influence of drugs, alcohol or medication. This may result in serious personal injury.
- Always be aware of your surroundings and stay alert for possible hazards.
- Use protective personal equipment such as safety glasses, non-skid safety shoes, sturdy gloves to reduce the risk of personal injury.
- Do not operate when barefoot or wearing open toed shoes.
- Dress appropriately. Do not wear loose clothing or jewellery and keep hair, clothing and gloves away from moving parts.
- Avoid accidental starting. Ensure the switch is in the off position before picking up or carrying the trimmer.
- Do not run with the trimmer.
- When operating the trimmer ensure that both hands are correctly positioned on the handle.
- Do not operate the trimmer if it is incomplete or has unauthorised modifications.
- Keep all body parts, especially hands and feet, away from the blade at all times.
- Warning, the blade will continue to move after the motor is switched off.
- Ensure that the motor has fully stopped before cleaning, clearing a blockage, checking, or carrying out maintenance on the power tool.
- Carry the hedge trimmer by the handle with the blade stopped.
- When transporting or storing the hedge trimmer always fit the protective blade cover.
- The operator is responsible for accidents or hazards occurring to other people at their property.
- Never operate the trimmer with

damaged guards or without the guards in place.

- This appliance is not intended for use by persons (including children) with reduced physical, sensory or mental capabilities or lack of experience or knowledge.
- Keep the product and all accessories away from hot surfaces.
- Never modify the trimmer in any way.

### **Electrical safety:**

- Do not operate trimmers in explosive atmospheres, such as in the presence of flammable liquids, gases or dust. Trimmers create sparks, which may ignite the dust and fumes.
- Do not use the trimmer when a thunderstorm is approaching.
- Avoid body contact with earthed or grounded surfaces, such as pipes. There is an increased risk of electric shock if your body is earthed or grounded.
- Do not expose trimmers to rain or wet conditions.
- Do not handle the charger or the trimmer with wet hands.
- Before charging check the power supply and charger cables for signs of damage or ageing.
- Do not overload the trimmer. Forcing the trimmer to cut may damage the motor. For safety the trimmer will automatically cut out if the motor becomes overloaded. If this occurs, wait a few seconds for the cut out to reset and then use lighter cuts to trim the hedge.

### **Battery safety:**

- This product contains Li-Ion batteries. Do not incinerate batteries or expose to high temperatures, as they may explode.
- Do not attempt to use charger with any other product or to charge this product with any other charger.
- Do not charge the battery when the surrounding air temperature or the battery pack is below 0°C or above 45°C.
- After heavy use or in high temperatures the battery may become warm. Allow the product to cool for 30 minutes before charging.
- Use only with the battery pack supplied.
- Leaks from battery cells can occur under extreme conditions. If the liquid gets on your skin wash immediately with soap and water. If the liquid gets into your eyes, flush them immediately with cold water for a minimum of 10 minutes and seek urgent medical attention.
- Do not store the battery outside for prolonged periods of time, especially over the winter months.

### **Training**

- Read the instructions carefully. Be familiar with the controls and the correct use of the machine.
- Never allow children or people unfamiliar with these instructions to use the machine. Local regulations can restrict the age of the operator.
- Keep in mind that the operator or user is responsible for accidents or hazards occurring to other people or their property.

## Preparation

- Before use, always visually inspect the machine for damaged, missing or misplaced guards or shields.
- Never operate the machine while people, especially children, or pets are nearby.

## Operation

- Keep supply and extension cords away from cutting means.
- Wear eye protection and stout shoes at all times while operating the machine.
- Avoid using the machine in bad weather conditions especially when there is a risk of lightning.
- Never operate the machine with damaged guards or shields or without guards or shields in place.
- Switch on the motor only when the hands and feet are away from the cutting means.
- Always disconnect the machine from the power supply (removable battery)
  - 1) whenever the machine is left unattended;
  - 2) before clearing a blockage;
  - 3) before checking, cleaning or working on the machine;
  - 4) after striking a foreign object;
  - 5) whenever the machine starts vibrating abnormally.
- Always ensure that the ventilation openings are kept clear of debris.

## Maintenance and storage

- Disconnect the machine from the power supply (removable battery) before carrying out maintenance or cleaning work.
- Use only the manufacturer's recommended replacement parts and accessories.

- Inspect and maintain the machine regularly. Have the machine repaired only by an authorised repairer.
- When not in use, store the machine out of the reach of children.

## Service:

- Do not use the trimmer if the switch does not turn it on or off. Any power tool that cannot be controlled by the switch is dangerous and must be repaired or replaced.
- Check for misalignment or binding of moving parts, breakage of parts and any other condition that may affect the trimmers operations. If damaged, have the power tool repaired or replaced.
- Check that the blade is clean and without damage. If the blade becomes worn, a replacement should be fitted before use.
- Wear protective gloves when handling or cleaning the blade.
- Before using the machine and after any impact, check for signs of wear and damage and repair or replace as necessary.
- Always ensure that the ventilation openings are kept clear of debris.
- Have your trimmer serviced by a qualified repair person using only genuine replacement parts. This will ensure that the safety of the trimmer is maintained.
- Do not attempt to repair any damaged parts on the trimmer unless you are qualified to do so.

## Intended Use:

- This product is intended for DOMESTIC USE ONLY.

# Warning Label Descriptions



Read instruction manual before use



Wear eye protection when using this product.



Wear ear protection when using this product.



General hazard safety alert.

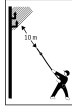


Measured sound power level: 90.47dB(A)  
Guaranteed sound power level: 94dB(A)

Note: Measured noise values determined according to 2000/14 EC (1.60m height, 1.0m distance away).



Do not use in rain or leave outdoors whilst raining.



Risk of fatal injury due to electric shock!  
Keep at least 10m away from electricity lines.

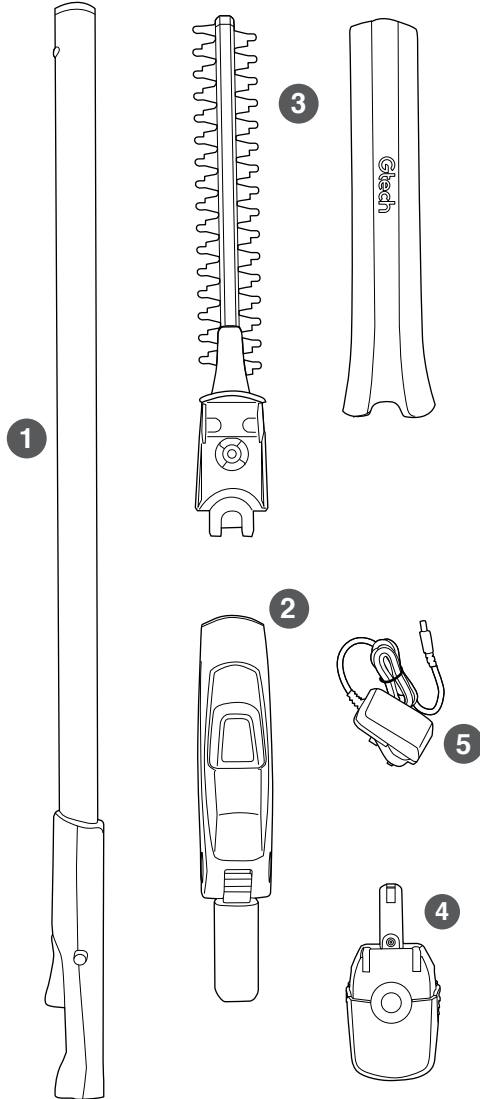
# Thank you for choosing a Gtech Hedge Trimmer

"I started Gtech to create sensible, easy to use products, which do a great job. Your opinion is important to us. Please take the time to write a review of your new Hedge Trimmer at [Trustpilot.co.uk](http://Trustpilot.co.uk). We will use your feedback to improve our products and services and let other people know what it's like to be part of the Gtech family."

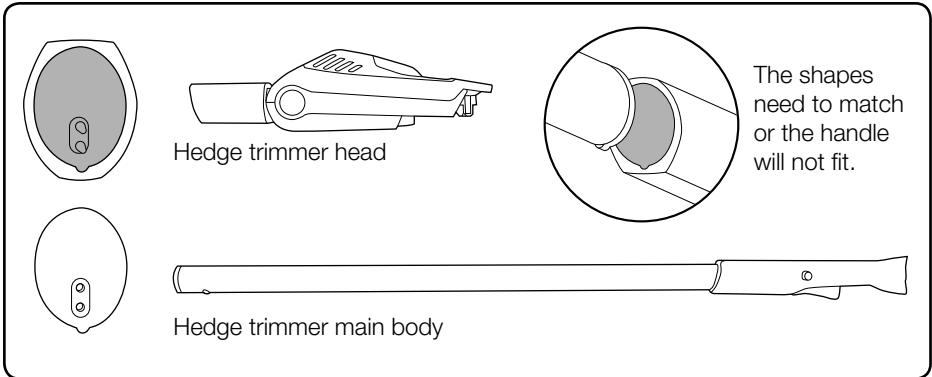
Nick Grey – Inventor, Owner of Gtech

## What's in the box

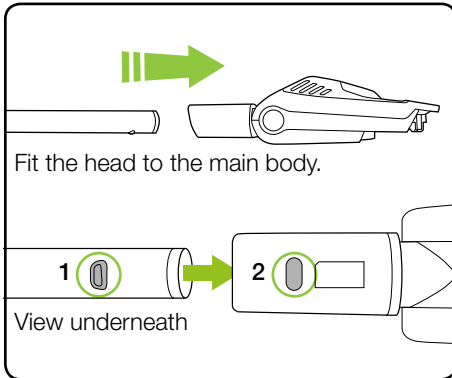
- 1 Hedge trimmer main unit
- 2 Hedge trimmer head
- 3 Blade + blade cover
- 4 Battery
- 5 Battery charger



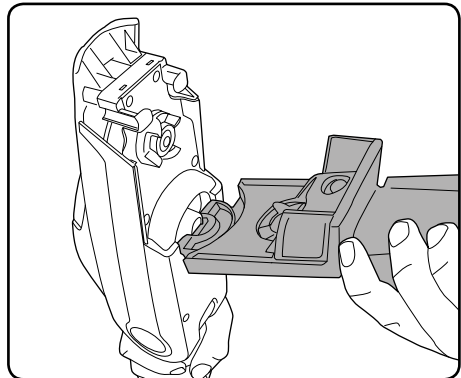
# Assembly



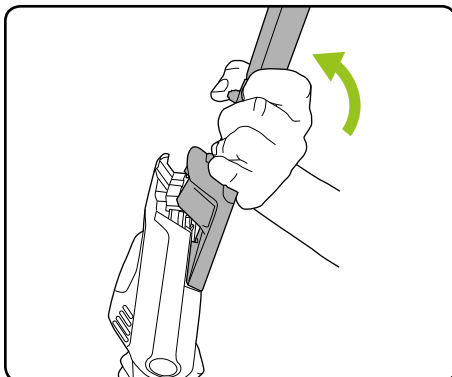
When inserting the body into the hedge trimmer head, ensure the body is the right way up. The shapes need to match or the handle will not fit.



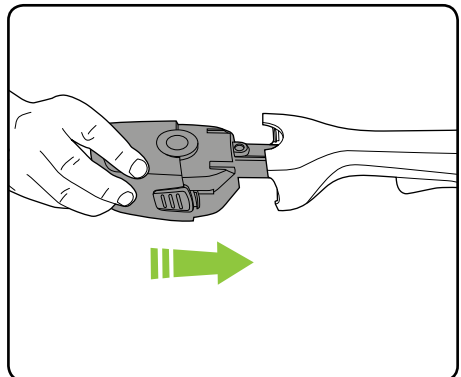
When the pole is fully inserted, the button (1) will pop up into the aperture (2)



With the blade cover still on, connect the hedge trimmer blade to the head.

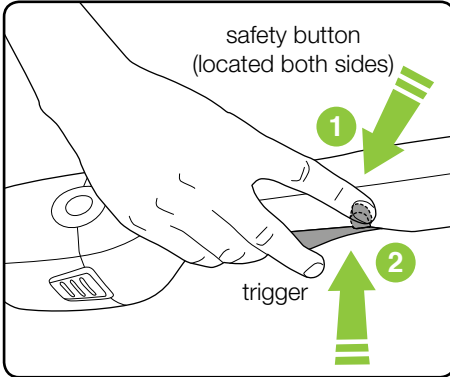


Locks (clicks) securely in place.

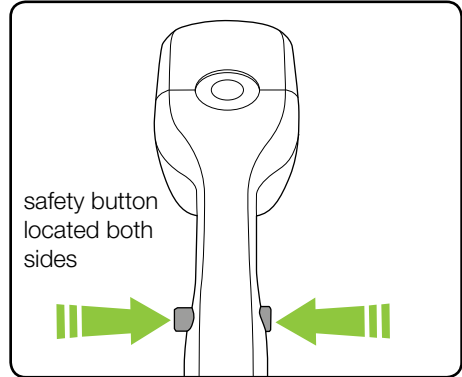


Insert the battery, which will click once fully inserted.

## Operation

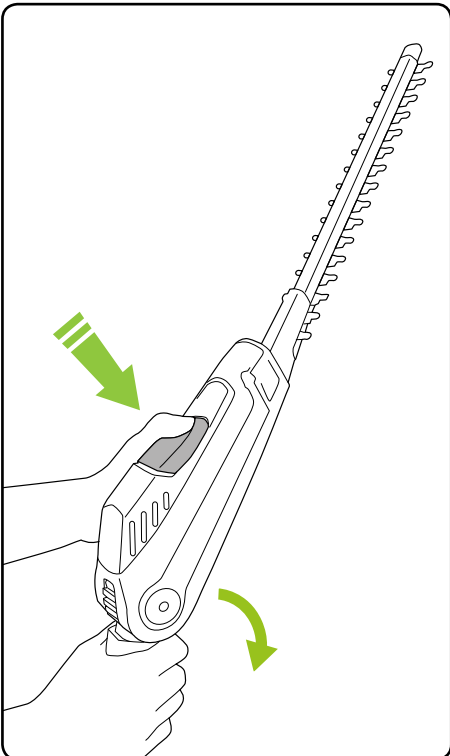


Push and hold the safety button on either side, then press the trigger to operate.



When you release the trigger the hedge trimmer will stop.

## Rotating the hedge trimmer blade

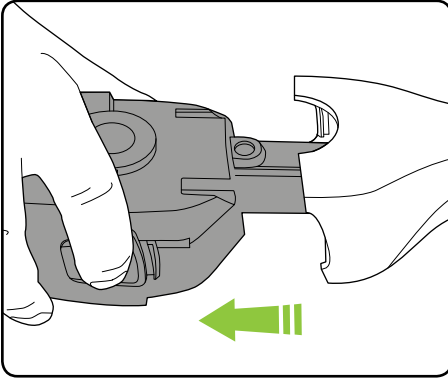


**!** **WARNING:** To reduce risk of personal injury, ensure the trimmer is switched off and the blade has stopped before adjusting the cutting head.

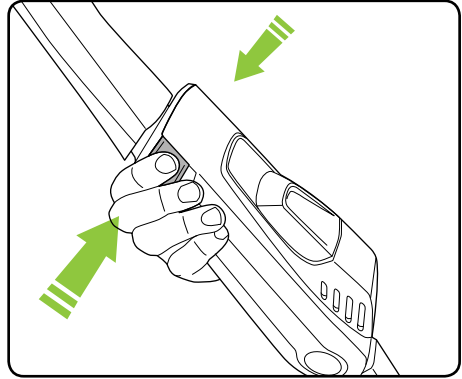
**!** **WARNING:** Ensure the cutting head is securely locked in position before starting the trimmer.



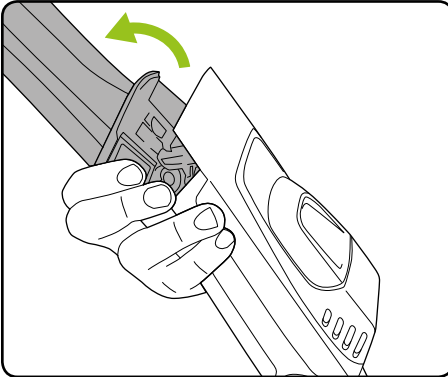
## Removing the blade



Remove the battery and ensure the cover is on the blade.



Press the green buttons on either side of the trimmer head.

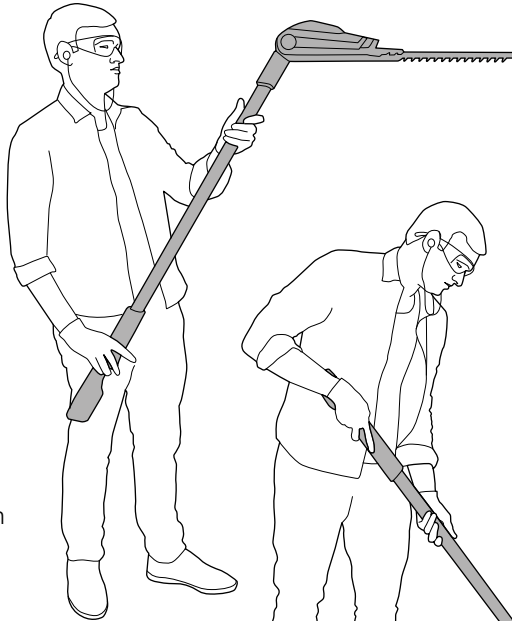


The blade will pivot away from the head.



### **Up high**

Firmly grip the base and lower end of the pole for reaching high hedge tops.



### **Standard reach**

Firmly grip the base and middle section of the pole for reaching standard height hedge tops.



### **Low**


Firmly grip the handle and lower end of the pole for trimming the bottom of hedges.


## Using your hedge trimmer


Hold the trimmer away from your body using both hands and stand on a solid and secure surface.


The double edge blade allows you to cut with either a side to side or up and down motion:

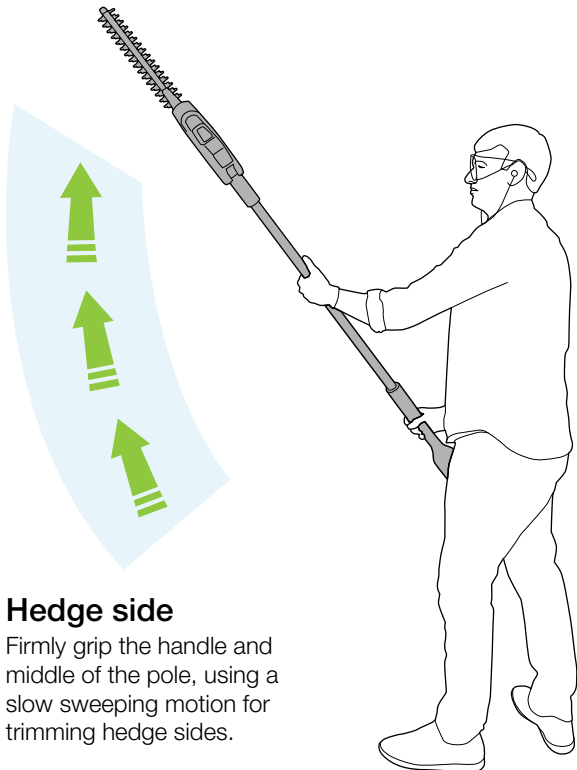
When cutting move slowly and steadily so that stems are fed directly into the blade. Cut the sides of the hedge first and then the top. To keep the sides of the hedge flat cutting upwards with the growth is recommended.

 **WARNING:** Risk of electric shock. Pay attention to the position of overhead cables.

 **WARNING:** To reduce the risk of personal injury always wear eye protection. Personal protective equipment such as sturdy gloves and non-slip shoes are recommended.

 **WARNING:** To reduce risk of injury from accidental start up of the trimmer always ensure that the protective blade guard is fitted when the trimmer is not in use, being transported, handled or stored.

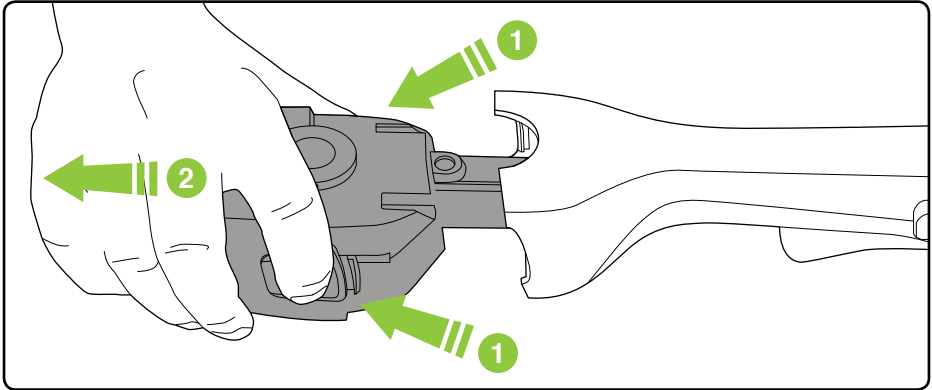
 Pay attention to the hazard posed to third parties from the increased working area of the trimmer.



### Hedge side

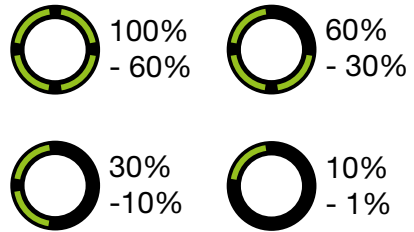
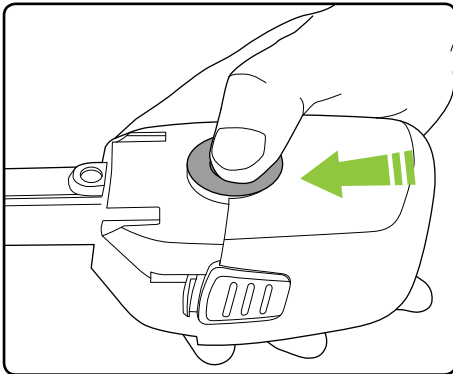
Firmly grip the handle and middle of the pole, using a slow sweeping motion for trimming hedge sides.

## Removing the battery for charging



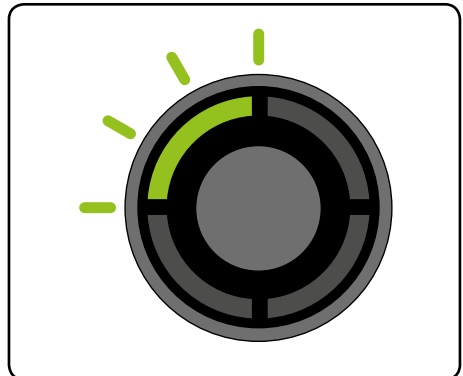
Press both buttons at the same time and pull to remove the battery.

## Checking battery charge status



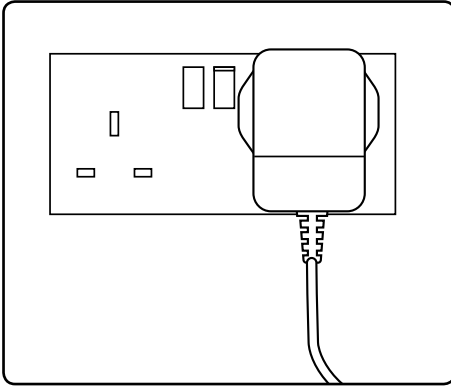
Figures are approximate.

Press the button to check how much charge there is in the battery. The number of lit LEDs shows the charge.

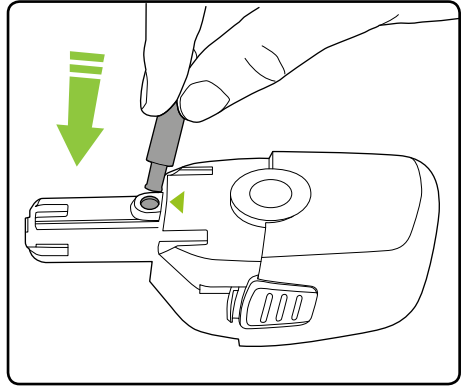


When there is no power left the final LED will flash for 10 seconds then go out.

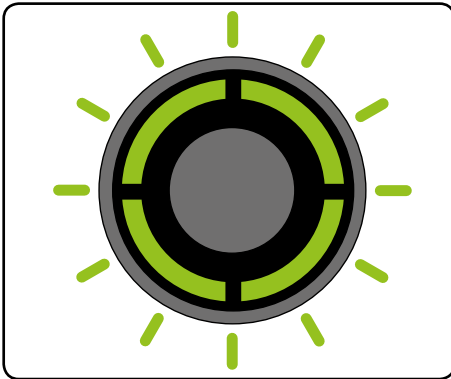
## Charging the battery



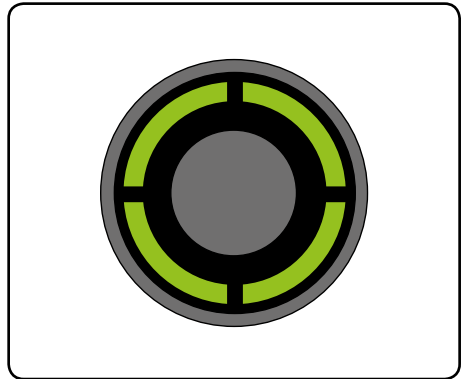
Plug the charger into an ordinary plug socket.



Connect the charger to the battery where indicated.



While charging the LEDs will progressively pulse until all four are lit.



When the battery is fully charged the LEDs will stop pulsing and remain green in colour.

## Reconnecting battery to hedge trimmer

For reconnecting the battery to your hedge trimmer, please refer to the instructions on page 7 of this manual.

## Product Care

---



Wear protective gloves when handling or cleaning the blade.



To reduce risk of injury ensure that protective blade guard is fitted when the trimmer is not in use, being transported, handled or stored.

To ensure that your HT20 gives you long and reliable service, carry out the following maintenance regularly:

- Check for obvious defects such as loose, dislodged, worn or damaged blades, loose fixings, and worn, damaged, or loose parts.
- Check that covers and guards are correctly fitted and undamaged.
- Always clean the cutting blade after use and apply a lubricating oil or spray before storage.
- During longer cutting periods it is recommended to lubricate the blade. This will improve cutting performance and maximise the run time.
- Before use check the condition of the cutting edges of the blade and that the blade fixings are secure.
- Do not use water, solvents, or polishes to clean the trimmer. Wipe clean with a dry cloth.
- Do not use abrasive materials to clean the product, and do not immerse it in water.
- Store in a secure, dry place, out of reach of children. Do not expose to moisture.

**PLEASE NOTE:** If the product needs to be repaired or replaced only use replacement parts supplied by the manufacturer.

Spare parts can be purchased from Grey Technology Ltd:

tel : **01905 345 891** [www.gtech.co.uk](http://www.gtech.co.uk)

## Troubleshooting


Trimmer fails to operate	<ol style="list-style-type: none"><li>1. Recharge battery.</li><li>2. Check switch. It will click if operating correctly.</li><li>3. Blade is jammed</li></ol>
Cutting blade will not cut	<ol style="list-style-type: none"><li>1. Blade is either worn or damaged.</li><li>2. Replace blade.</li></ol>
Blade will not move	<ol style="list-style-type: none"><li>1. Clean and lubricate blade.</li><li>2. Replace blade.</li></ol>
Cutting time has reduced	<ol style="list-style-type: none"><li>1. Use lighter cutting action and cut in several stages.</li><li>2. Fully discharge and recharge battery.</li><li>3. Clean and lubricate blade.</li><li>4. Replace blade.</li></ol>
Trimmer stops when cutting	<ol style="list-style-type: none"><li>1. Wait for automatic cut out to reset. Use lighter cutting action.</li><li>2. Check blade and remove any debris.</li><li>3. Charge battery.</li></ol>
LEDs show solid red	<ol style="list-style-type: none"><li>1. The hedge trimmer has jammed.</li><li>2. Check blade and remove any debris.</li></ol>
<p>If this doesn't solve your problem don't worry, we will help. Go to <b><a href="http://www.gtech.co.uk">www.gtech.co.uk</a></b> or call <b>01905 345 891</b></p>	

## HEDGE TRIMMER TECHNICAL SPECIFICATION

Blade length	315mm
Blade cutting width	15mm
No load speed	1120min <sup>-1</sup>
Battery	18V DC 2000mAh Li-ion
Charging period	4 hours
Battery charger output	27V $\overline{=}$ 0.5A
Battery charger input	100-240V~50/60Hz
Battery charger type	K13S270050B
Measured sound power level, LpA,d	90.47dB(A) K:3dB(A)
Guaranteed sound power level, LwA,d	94dB(A)
Weight	2.25kg
Vibration	1.36 m/s <sup>2</sup> K=1.5 m/s <sup>2</sup>



# Environmental and Product Recycling

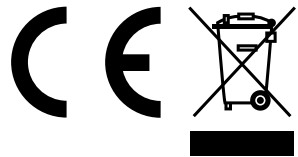
The  symbol indicates that this product is covered by legislation for waste electrical and electronic products (EN2002/96/EC)

When the product has reached the end of its life please do not dispose of it with general household waste. Consider the environment and take it to a recognised recycling facility.

The product contains a Li-Ion battery which should not be disposed of with general household waste. The battery should be disposed of properly with the product at a recycling facility.

Call your local council, civic amenity site, or recycling centre for information on the disposal and recycling of electrical products.

Alternatively visit [www.recycle-more.co.uk](http://www.recycle-more.co.uk) for advice on recycling and to find your nearest recycling facilities.



## WARRANTY – TERMS AND CONDITIONS

The warranty on your HT20 is 2 years from date of purchase.  
If your Gtech HT20 breaks, don't worry, we're here to help.  
Go to [www.gtech.co.uk](http://www.gtech.co.uk) or call **01905 345 891** for assistance.

### WHAT ISN'T COVERED

Gtech does not guarantee the repair or replacement of the product as a result of:

- Normal wear and tear.
- Accidental damage, faults caused by negligent use or care, misuse, neglect, careless operation or handling of the hedge trimmer which is not in accordance with the HT20 operating manual.
- Use of the hedge trimmer for anything other than normal domestic garden purpose.
- Use of parts and accessories which are not Gtech genuine components.
- Faulty installation (except where installed by Gtech).
- If it is modified in any way.
- Repairs or alterations carried out by parties other than Gtech or its authorised agents.
- If you are in doubt as to what is covered by your warranty, please call the Gtech Customer Care Helpline on 01905 345 891.

### SUMMARY

- The guarantee becomes effective at the date of purchase (or the date of delivery if this is later).
- Battery is covered by this guarantee.
- You must provide proof of delivery/purchase before any work can be carried out on the hedge trimmer. Without this proof, any work carried out will be chargeable. Please keep your receipt or delivery note.
- All work will be carried out by Gtech or its authorised agents.
- Any parts that are replaced will become the property of Gtech.
- The repair or replacement of your hedge trimmer is under guarantee and will not extend the warranty period.
- The guarantee provides benefits which are additional to and do not affect your statutory rights as a consumer.

# EC Declaration of Conformity

We, manufacturer/importer

Grey Technology Ltd  
1&2 Cupola Court  
Spetchley  
Worcestershire  
WR5 1RL

declare that the product

## HT20 Cordless Hedge Trimmer

complies with the essential health and safety requirements of the following directives:

- 2004/108/EC - EMC Directive.
- 2006/42/EC - Machinery Directive
- 2006/95/EC - Low Voltage Directive
- 2000/14/EC - Noise emission in the environment by equipment for use outdoors Directive.
  - Conformity assessment procedure as per ANNEX VI.
  - Measured Sound Power Level = 90.47 dB(A) K = 3dB
  - Declared Guaranteed Sound Power Level = 94 dB(A)
- 2011/65/EU - RoHS directive

Technical documentation holder: Grey Technology Ltd, WR5 1RL

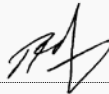
Standards and technical specifications referred to:

Parts of EN 60745-1  
EN ISO 10517  
EN55014-1  
EN55014-2  
EN61000-3-2  
EN61000-3-3

Dokumentationsbevollmächtigter :  
Authorized person for the compilation  
of the technical documentation:

Paul Pickford

Herstellerunterschrift/Datum:  
Authorized Signature/Date/Place:



29.2.16 Worcester, UK

Angaben zum Unterzeichner:  
Title of Signatory:

Technical Director

# Gtech

**Grey Technology Limited**

Brindley Road, Warndon, Worcester WR4 9FB

email: [support@gtech.co.uk](mailto:support@gtech.co.uk)

telephone: 01905 345891

[www.gtech.co.uk](http://www.gtech.co.uk)