

# Gtech

## Safety and Instruction Manual for HT05 Ultimate Blade Cordless Hedge Trimmer





# Important Safeguards



## **IMPORTANT:**

READ ALL INSTRUCTIONS  
BEFORE USE.

RETAIN INSTRUCTIONS FOR FUTURE  
REFERENCE.

## **WARNING:**

### **THIS PRODUCT CAN CAUSE SERIOUS INJURIES.**

Read all instructions. Failure to follow all instructions listed below may result in electric shock, fire and/or serious injury. The term “power tool” in all of the warnings listed below refers to your mains-operated (corded) power tool or battery-operated (cordless) power tool.

## **WARNING:**

When using any electrical appliance, basic safety precautions should always be observed, including the following, to reduce the risk of fire, electrical shock, or injury.

## **Work area:**

- Keep work area clean and well lit. Cluttered and dark areas invite accidents.
- Do not operate power tools in explosive atmospheres, such as in the presence of flammable liquids, gases or dust. Power tools create sparks which may ignite the dust and fumes.
- Keep children and bystanders away while operating a power tool. Distractions can cause you to lose control.
- Not to be used as a toy. Not to be used near children. Never allow children to use the power tool. When not in use store the power tool out of the reach of children.
- Keep children and bystanders away while operating the power tool, distractions can cause you to lose control.
- Always be sure of your footing on ladders or slopes, do not over-reach or use on excessively steep slopes.

## **Electrical safety:**

- Power tool plugs must match the outlet. Never modify the plug in any way.
- Do not use any adaptor plugs with earthed (grounded) power tools. Unmodified plugs and matching outlets will reduce the risk of electric shock.
- Avoid body contact with earthed or grounded surfaces such as pipes, radiators, ranges and refrigerators. There is an increased risk of electric shock if your body is earthed or grounded.
- Do not expose power tools to rain or wet conditions. Water entering a power tool will increase the risk of electric shock.
- Do not abuse the cord. Never use the cord for carrying, pulling or unplugging the power tool. Keep cord away from heat, oil, sharp edges or moving parts. Damaged or entangled cords increase the risk of electric shock.
- When operating a power tool outdoors, use an extension cord suitable for outdoor use. Use of a cord suitable for outdoor use reduces the risk of electric shock.
- If the cord becomes damaged during use disconnect the cord from the power supply immediately- DO NOT touch the cable before disconnecting.
- Before use check the power supply and charger cables for signs of damage or ageing.
- When charging or operating the power tool it is recommended that the appliance should be supplied via a residual current device (RCD) with a tripping current of not more than 30mA.
- Do not handle the charger or the power tool with wet hands.

## Personal Safety:

- Stay alert, watch what you are doing and use common sense when operating a power tool. Do not use any power tool while you are tired or under the influence of drugs, alcohol or medication. A moment of inattention while operating power tools may result in serious personal injury.
- Always be aware of your surroundings and stay alert for possible hazards that you may not be aware of due to concentration on the power tool.
- Use safety equipment. Always wear eye protection. Safety equipment such as non skid shoes, safety glasses, sturdy gloves and hearing protection are recommended and will reduce the risk of personal injury.
- Do not operate when barefoot or wearing open sandals.
- Always wear substantial footwear and long trousers.
- Dress appropriately. Do not wear loose clothing or jewellery. Keep your hair, clothing and gloves away from moving parts. Loose clothes, jewellery or long hair can be caught in moving parts.
- Avoid accidental starting. Ensure the switch is in the off position before plugging in. Carrying power tools with your fingers on the switches or plugging in power tools that have the switch on invites accidents
- Remove any adjusting key or wrench before starting the power tool. A key or wrench left in a rotating part of the power tool may result in personal injury.
- Do not overreach. Keep proper footing and balance at all times. This enables better control of the power tool in unexpected situations
- Take care in slippery conditions, and on slopes and uneven ground.
- Do not run with the power tool.
- When operating the power tool ensure that both hands are correctly positioned on both handles. Do not operate this product if incomplete or with unauthorized modifications.
- Keep hands and feet away from the cutting element at all times, and especially when switching on.

- Warning, the cutting element will continue to move after the motor is switched off.
- Ensure that the motor has fully stopped before cleaning, clearing a blockage, checking, or carrying out maintenance on the power tool.
- Keep all parts of the body away from the cutting blade. Do not remove cut material or hold material to be cut when the blades are moving. Make sure the switch is off when clearing jammed material. A moment of inattention while operating the hedge trimmer may result in serious personal injury.
- Carry the hedge trimmer by the handle with the cutting blade stopped. When transporting or storing the hedge trimmer always fit the cutting blade cover. Proper handling of the hedge trimmer will reduce possible personal injury from the cutting blades
- Keep any cables away from the cutting area. During operation the cable may be hidden in shrubs and can be accidentally be cut by the blade
- The operator or user is responsible for accidents or hazards occurring to other people at their property.
- Never operate the power tool with damaged guards or without the guards in place.
- This appliance is not intended for use by persons (including children) with reduced physical, sensory or mental capabilities, or lack of experience and knowledge, unless they have been given supervision or instruction concerning use of the appliance by a person responsible for their safety.
- Children should be supervised to ensure that they do not play with the appliance.

## Power tool use and care:

- Do not force the power tool. Use the correct power tool for your application. The correct power tool will do the job better and safer at the rate for which it was designed.
- Do not use the power tool if the switch does not turn it on and off. Any power tool

of children and do not allow persons unfamiliar with the power tool or these instructions to operate the power tool. Power tools are dangerous in the hands of untrained users.

- Maintain power tools. Check for misalignment or binding of moving parts, breakage of parts and any other condition that may affect the power tools operation. If damaged, have the power tool repaired before use. Many accidents are caused by poorly maintained power tools.
- Check that the cutting blades are clean and without damage. If the blade becomes worn a replacement should be fitted before use.
- Use the power tool, accessories etc. In accordance with these instructions and in the manner intended for the particular type of power tool, taking into account the working conditions and the work to be performed. Use of the power tool for operations different from those intended could result in a hazardous situation.
- Only use the machine in daylight or good artificial light.
- Before using the machine and after any impact, check for signs of wear or damage and repair as necessary.
- Check the hedge for any objects such as wire fences that could damage or jam the trimmer blade.
- Always ensure that ventilation openings are kept clear of debris.
- Keep the product and all accessories away from hot surfaces.
- Store the tool in a secure, dry place out of reach of children and animals.
- Never modify the trimmer in any way as this may increase the risk of personal injury.

#### **Battery use and care:**

- Do not attempt to use the charger with any other product nor attempt to charge this product with another charger.
- Using a charger from a different product may cause a risk of fire.
- Leaks from battery cells can occur under extreme conditions. If the liquid gets on

the skin wash immediately with soap and water. If the liquid gets into the eyes, flush them immediately with clean water for a minimum of 10 minutes and seek medical attention.

- This product contains Li-Ion batteries. Do not incinerate batteries or expose to high temperatures, as they may explode.
- Use power tools only with specifically designated battery packs. Use of any other battery packs may create a risk of injury and fire.
- When the battery pack is not in use, keep away from other metal objects such as: paper clips, coins, keys, nails, screws, or other small metal objects that can make a connection from one terminal to another.
- Shorting the battery terminals may cause burns or fire.
- Under abusive conditions liquid may be ejected from the battery; avoid contact. If contact accidentally occurs, flush with water. If liquid contacts eyes additionally seek medical help. Liquid ejected from a battery may cause irritation or burns.
- In an emergency situation contact professional help immediately!

#### **Service:**

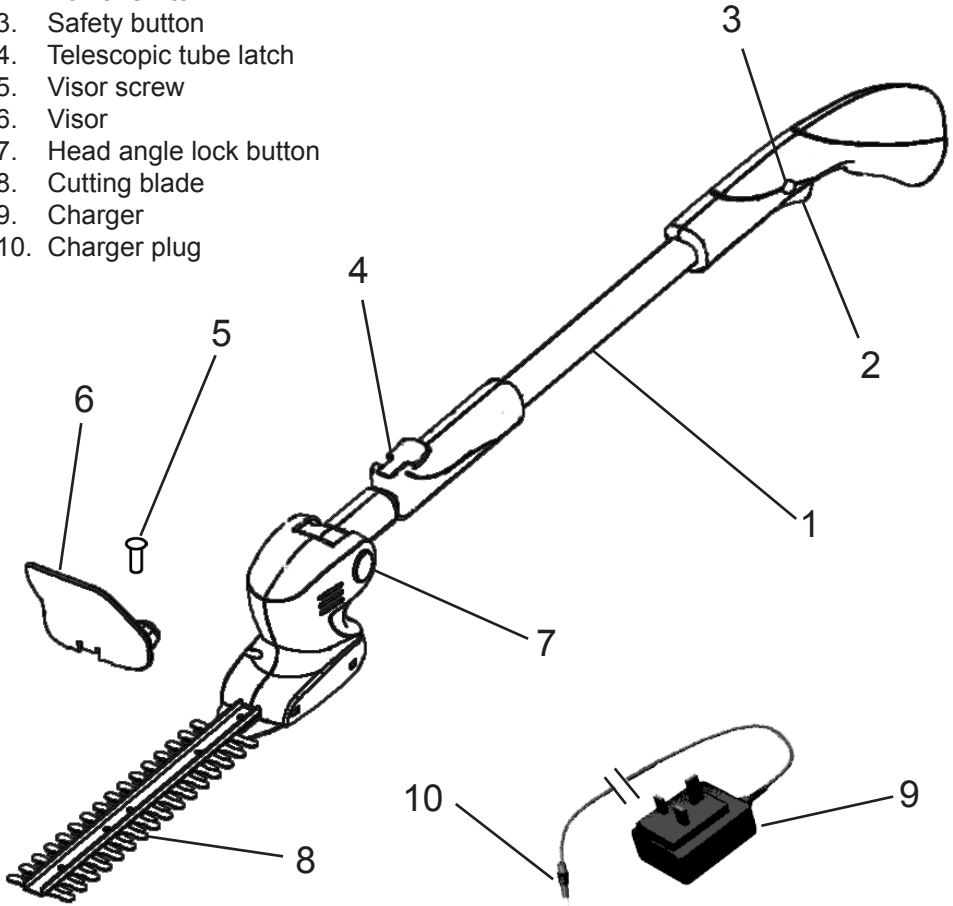
- Have your power tool serviced by a qualified repair person using only identical replacement parts. This will ensure that the safety of the power tool is maintained.
- Do not attempt to repair any damaged parts on this product unless you are qualified to do so.
- Never use replacement parts or accessories not provided or recommended by the manufacturer.

#### **Intended use:**

This product is intended for DOMESTIC USE ONLY

# Unpacking: Part location

1. Main unit
2. Power switch
3. Safety button
4. Telescopic tube latch
5. Visor screw
6. Visor
7. Head angle lock button
8. Cutting blade
9. Charger
10. Charger plug



## Warning Label Descriptions



Read instruction manual before use



General hazard safety alert.



Do not use in rain or leave outdoors whilst raining.



Wear eye protection when using this product.

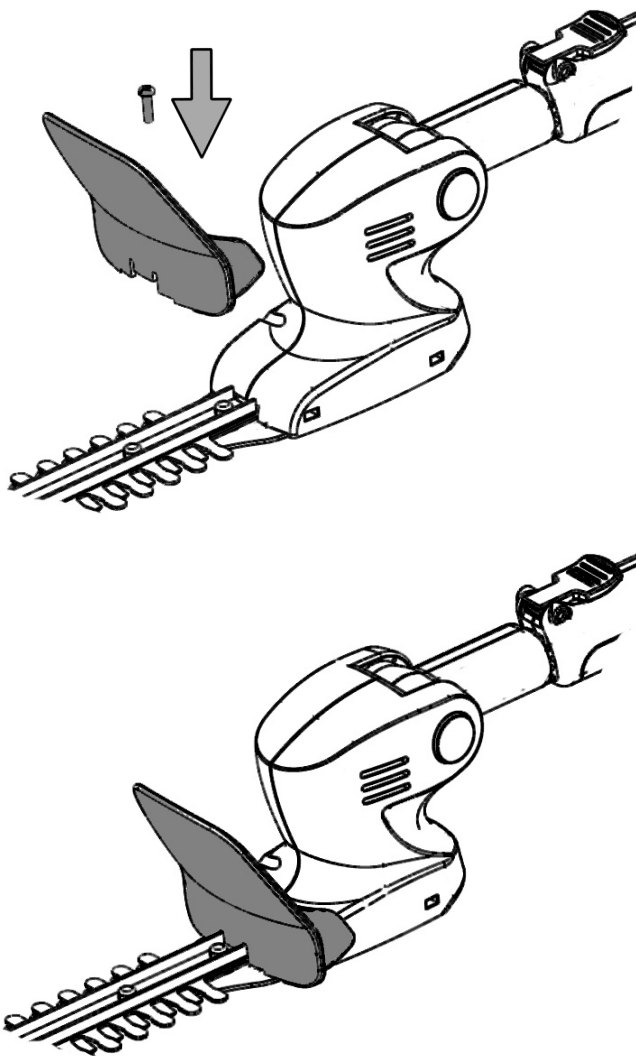


Measured sound power level: 84 dB(A)  
Guaranteed sound power level: 95dB(A)

Note: Measured noise values determined according to 2000/14 EC (1.60m height, 1.0m distance away).

## Assembly

Locate the visor onto the cutting head.  
Fit the screw and secure in place.



# Battery Charging & Recharging

**The battery is fitted in the handle and CANNOT be removed.**

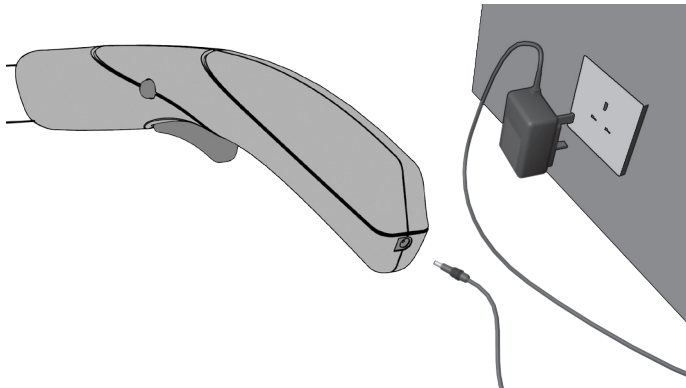
Connect the supplied battery charging adaptor to the charging socket located on the rear of the handle.

Plug the charger into a suitable electrical socket and switch on.

The indicator light on the charger will light RED when the battery is charging.

When the battery is fully charged the indicator light will turn GREEN.

From flat the battery will take approximately 3 hours to fully charge.



Once the battery is fully charged remove the charging plug from the handle, switch off the charger at the mains socket, and unplug the charger from the mains socket.

**WARNING : DO NOT PULL THE CHARGER BY THE CORD.**

**IMPORTANT NOTE :** when the battery is running low a cut out mechanism will stop the product from working. This is to protect the Li-Ion battery from running completely flat, and will maintain the battery life.

**CAUTION :** do not charge the battery when the surrounding air temperature or the battery's are below 0°C or above 45°C

After heavy use or in high temperatures the battery may become warm. Allow the product to cool for 15 - 30 minutes before charging.

**WARNING : ONLY USE THE CHARGER PROVIDED WITH THE PRODUCT.**

**USING ANY OTHER CHARGER MAY DAMAGE THE PRODUCT AND THE BATTERY.**



## Extension tube adjustment

The telescopic tube length on the trimmer can be extended to allow you to reach difficult places without the use of a ladder.

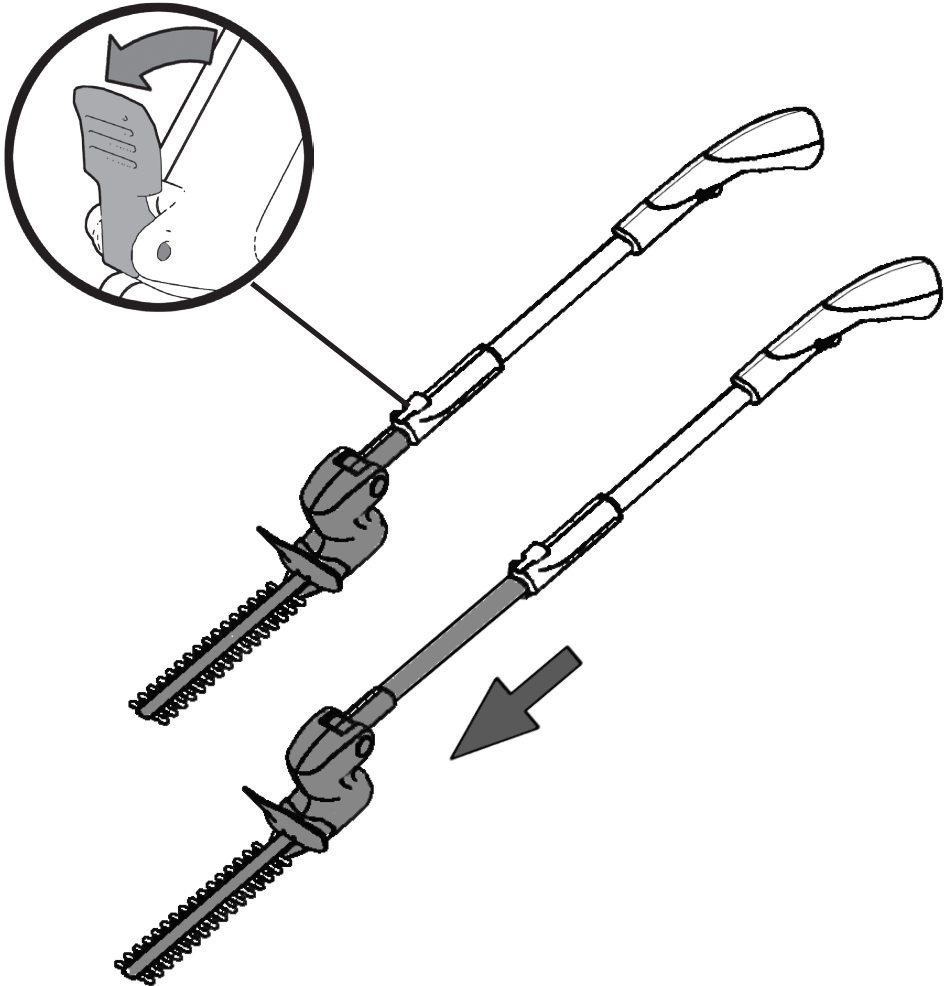
**WARNING : do not attempt to adjust the telescopic tube whilst the blade is moving.**

### Adjusting the handle length:

Grip the trimmer firmly and release the latch on the lower handle.

Extend the telescopic tube to the desired length.

Press the latch down firmly to lock the telescopic tube in position.



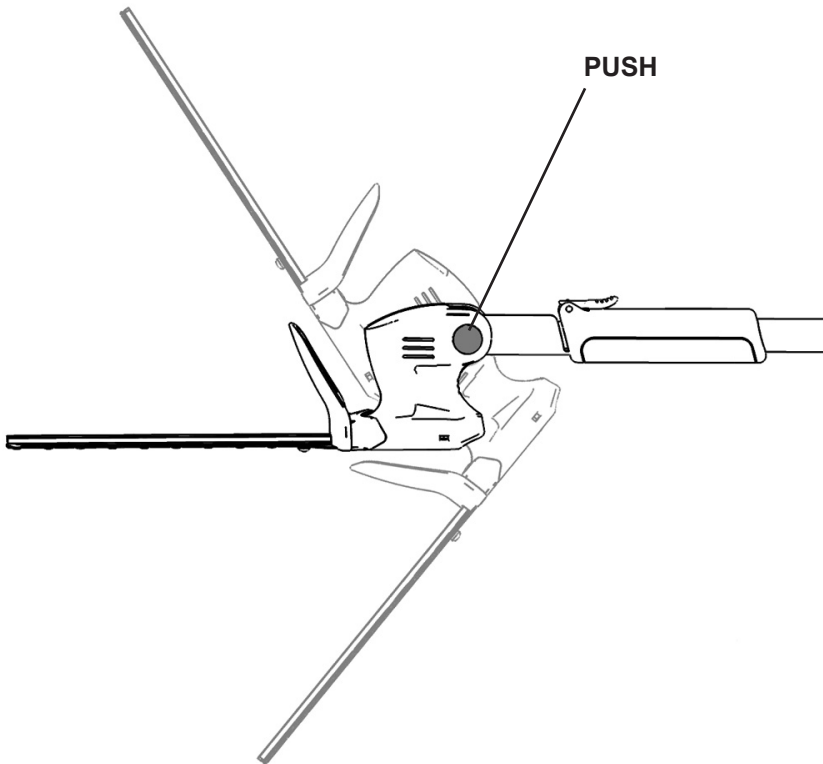
## Cutting head adjustment

The cutting head can be adjusted to different angles for ease of cutting in different conditions.

**WARNING : do not attempt to adjust the cutting head while the blade is moving.**

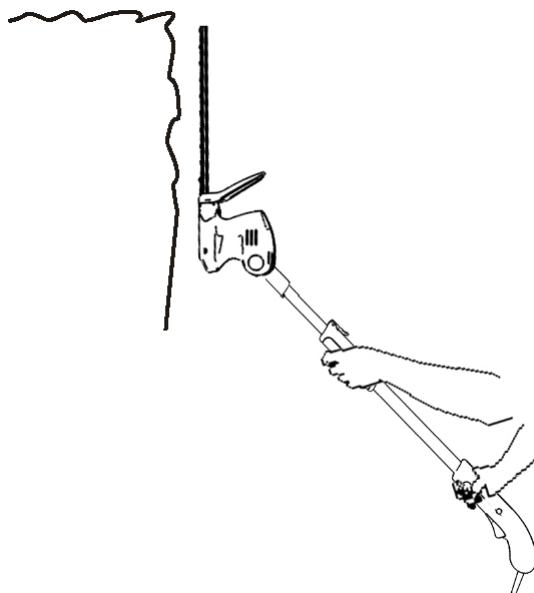
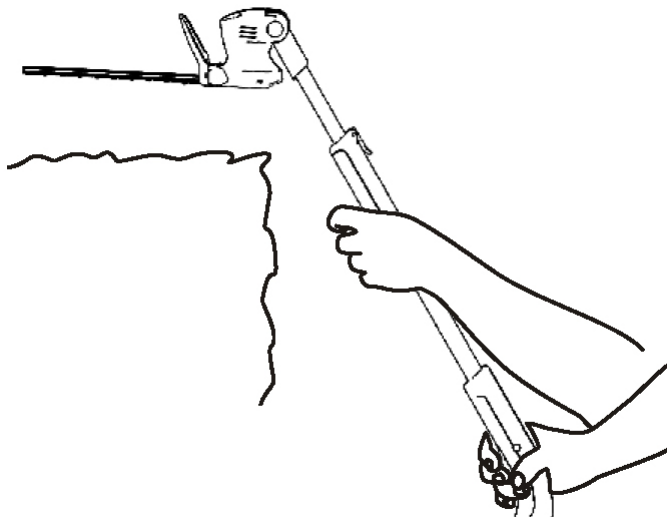
Grip the head of the trimmer, press and hold the button marked 'PUSH'.  
Rotate the head to the desired angle.  
Release the button to lock the head in position.

**Ensure the button and head are securely locked in position before starting the trimmer.**



## Using your trimmer

Adjusting the cutting head angle and telescopic tube length allows the trimmer to be used for easy cutting in different situations such as the sides and tops of hedges.



# Using your trimmer

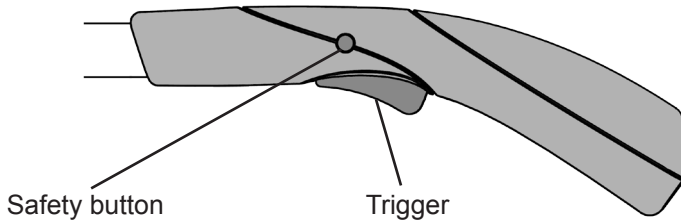
The handle is designed with a safety button to prevent accidental starting.

To start the trimmer:

Press and hold the safety button located on either side of the handle, then press the trigger.

Continue holding the trigger and release the safety button.

The trimmer will be on for as long as the trigger is pressed.



To stop the trimmer:

Release the trigger to stop the trimmer.

**PLEASE NOTE** - When the battery is running low a cut out mechanism will stop the product from working.

This is to protect the Li-Ion battery from running completely flat, and will maintain the battery life.

**If this happens during normal operation refer to the section on battery charging.**

## Cutting with your trimmer

Hold the trimmer away from the body using both hands. Stand in a secure and stable position.

The double edge blade enables cutting with either a side to side or up and down action.

Before cutting, check the hedge for any objects such as wire fences that could damage or jam the trimmer blade.

When cutting move slowly and steadily along the line of cut so that stems are fed directly into the blades.

Cut the sides of the hedge first then the top. To keep the sides of the hedge flat cutting upwards with the growth is recommended. To achieve a level finish, fasten a piece of string along the length of the hedge and use a guide to give an even cut.

Take care not to cut objects such as wire that may be hidden in the hedge as this could cause damage to the cutting blades and drive mechanism.

Take care not to overload the trimmer. Attempting to force the trimmer to cut may damage the motor. To prevent overloading check to see if the hedge is very thick or dense and to reduce load on the motor cut long or thick hedges in stages with several light cuts.

**NOTE: the trimmer is fitted with a self-resetting protective cut-out. This will stop the trimmer if the motor becomes overloaded. If this occurs, wait a few seconds for the cut-out to reset and then use lighter cuts.**

# Care, Maintenance, and Storage

**Wear protective gloves when handling the blade.**

**To ensure long and reliable service, carry out the following maintenance regularly:**

Check for obvious defects such as loose, dislodged, worn or damaged blades, loose fixings, and worn, damaged, or loose parts.

Check that covers and guards are correctly fitted and undamaged.

Wear gloves when handling or cleaning the cutting blade.

Always clean the cutting blade after use and apply a lubricating oil or spray before storage.

During longer cutting periods it is recommended to lubricate the blade. This will improve cutting performance and maximise the run time.

Before use check the condition of the cutting edges of the blade and that the blade fixings are secure.

When not in use ensure that the blade guard is fitted.

Do not use water, solvents, or polishes to clean the trimmer. Wipe clean with a dry cloth.

Do not use abrasive materials to clean the product, and do not immerse it in water.

Store in a dry place. Do not expose to moisture.

Store the tool in a secure, dry place out of reach of children and animals.

**If the product needs to be repaired or replaced only use replacement parts which are approved by the manufacturer.**

**Spare parts can be purchased from Grey Technology Ltd:**

**tel : 0870 794 4001 [www.greytechnology.co.uk](http://www.greytechnology.co.uk)**

# Troubleshooting

PROBLEM	POSSIBLE REASON	POSSIBLE SOLUTION
Trimmer fails to operate	<ol style="list-style-type: none"> <li>1. Battery flat</li> <li>2. Faulty switch</li> </ol>	<ol style="list-style-type: none"> <li>1. Recharge battery</li> <li>2. Switch in handle will 'click' if operating correctly</li> </ol>
Cutting blade will not cut	<ol style="list-style-type: none"> <li>1. Blade worn</li> <li>2. Blade damaged</li> </ol>	<ol style="list-style-type: none"> <li>1. Replace blade</li> <li>2. Replace blade</li> </ol>
Blade will not move	<ol style="list-style-type: none"> <li>1. Blade not cleaned after use and become seized during storage</li> <li>2. Blade teeth jammed or damaged</li> </ol>	<ol style="list-style-type: none"> <li>1. Clean and lubricate blade</li> <li>2. Replace blade</li> </ol>
Cutting time low	<ol style="list-style-type: none"> <li>1. Battery flat</li> <li>2. Blade needs cleaning</li> <li>3. Blade need lubrication</li> <li>4. Blade damaged or worn</li> <li>5. Overloading motor</li> </ol>	<ol style="list-style-type: none"> <li>1. Fully discharge and recharge battery</li> <li>2. Clean blade</li> <li>3. Lubricate blade</li> <li>4. Replace blade</li> <li>5. Use lighter cutting action and cut in several stages.</li> </ol>
Trimmer stops when cutting	<ol style="list-style-type: none"> <li>1. Overloaded motor</li> <li>2. Blade jammed</li> <li>3. Battery flat</li> </ol>	<ol style="list-style-type: none"> <li>1. Wait for cut-out to reset, then use lighter cutting action.</li> <li>2. Check blade and remove any debris.</li> <li>3. Charge battery</li> </ol>
No light on the charger	<ol style="list-style-type: none"> <li>1. Charger not fully pushed into mains socket.</li> <li>2. Mains socket not switched on</li> <li>3. Defective mains socket, cable, or charger</li> </ol>	<ol style="list-style-type: none"> <li>1. Push the charger fully into mains socket</li> <li>2. Switch on mains socket</li> <li>3. Consult a qualified electrician to check the socket. Contact customer service centre or dealer.</li> </ol>

**Should you experience any problems please do not return the product to the shop.**

**For any help, technical assistance, or spare parts please contact the Gtech helpline.**

**tel : 0870 794 4001**

**email : [support@greytechnology.co.uk](mailto:support@greytechnology.co.uk)**

# Environmental and Product Recycling

The  symbol indicates that this product is covered by legislation for waste electrical and electronic products (EN2002/96/EC)

When the product has reached the end of its life please do not dispose of it with general household waste. Consider the environment and take it to a recognised recycling facility.

The product contains a Li-Ion battery which should not be disposed of with general household waste. The battery should be disposed of properly with the product at a recycling facility.

Call your local council, civic amenity site, or recycling centre for information on the disposal and recycling of electrical products.

Alternatively visit [www.recycle-more.co.uk](http://www.recycle-more.co.uk) for advice on recycling and to find your nearest recycling facilities.



<b>Technical specification HT05</b>	
Blade length	23cm
Blade cutting width	8mm
No load speed	1200rpm
Battery type	14.4V DC, 1.9Ah Li-Ion
Rated input power	90W
Charging period for fully discharged battery	3 hours
Charger output	17.0V DC, 600mA
Charger input	100-240V ~ 50/60Hz
Charger type	JY-170-060
Measure sound power level, LpA,d	84 dB(A)
Guaranteed sound power level, LwA,d	95 dB(A)
Weight	1.6Kg
Vibration	4.5m/s <sup>2</sup>

**WARNING : ONLY USE THE CHARGER PROVIDED WITH THE PRODUCT. USING ANY OTHER CHARGER MAY DAMAGE THE PRODUCT AND THE BATTERY.**

**CAUTION : DO NOT CHARGE WHEN THE SURROUNDING AIR TEMPERATURE OR THE BATTERY ARE BELOW 0°C OR ABOVE 45°C**

Gtech helpline : 0870 7944001 email : [support@greytechnology.co.uk](mailto:support@greytechnology.co.uk)



# Warranty Information

Grey Technology has provided the HT05 Ultimate Blade Cordless Telescopic Hedge Trimmer with a 12 month guarantee.

## In Guarantee

Please retain your receipt as proof of purchase. In the rare and unfortunate event of your Gtech product being faulty, please accept our apologies and we will aim to remedy the problem as fast as possible once brought to our attention. However please be aware that due to Company Policy Grey Technology can only repair or replace all or part of the product if proof of purchase is provided and the claim is made within 12 months of the purchase date.

If your product is within the 12 months warranty period you should either return this product with its receipt to the retailers where the product was purchased or if a simple part or advice is required ring the Gtech Helpline where we will be more than happy to assist.

Please note: Gtech cannot refund any monies if the product was brought from a third party.

We would like to remind our customers that the Gtech guarantee does not cover any unauthorised repairs and will be annulled:

1. if the product has been damaged due to incorrect use or maintenance.
2. if any part is modified or replaced or if it is used in any way that is not recommended by Gtech.
3. if it is used with any parts not produced or not recommended by Gtech.
4. if it is used for purposes other than those specified by Gtech.

If after reading the manual and following the instructions you are sure that the product is defective please call the Gtech Helpline on 0870 7944001. A customer service advisor will be on hand to deal with any problems you have with our product. To assist them please be ready with the product, a detailed description of the problem, and your proof of purchase.

## Out of Guarantee

If your Gtech product is over 12 months old and you need any parts or advice then please contact our Helpline. Parts will be sent out usually within 3 weeks of request.

**WARNING : Only use the charger supplied with the product.**

**Using another charger may damage the product and the battery and will invalidate your guarantee.**





# EC Declaration of Conformity

We, manufacturer/importer

Grey Technology Ltd  
Units 1&2 Cupola Court  
Spetchley  
Worcester  
WR5 1RL

declare that the product

## HT05 Ultimate Blade Cordless Hedge Trimmer

complies with the essential health and safety requirements of the following directives:

- 2004/108/EC - EMC Directive.
- 98/37 EEC - Machinery Directive
- 73/23 EEC - Low Voltage Directive
- 2000/14/EC - Noise emission in the environment by equipment for use outdoors Directive.
- Conformity assessment procedure as per ANNEX VI.
- Measured Sound Power Level = 84 dB(A)
- Declared Guaranteed Sound Power Level = 95 dB(A)
- Notified Body: Intertek Testing & Certification Ltd, Davy Avenue, Knowlhill, Milton Keynes, MK5 8NL

Technical documentation holder: Grey Technology Ltd, WR5 1RL

Standards and technical specifications referred to:

EN60745-1  
EN60745-2-15  
EN ISO 3774  
EN ISO 11094  
EN55014-1  
EN55014-2  
EN61000-3-2  
EN61000-3-3



Grey Technology Ltd  
Units 1&2 Cupola Court  
Spetchley  
Worcester  
WR5 1RL

Tel: 0870 7944001  
email: [support@greytechnology.co.uk](mailto:support@greytechnology.co.uk)  
[www.greytechnology.co.uk](http://www.greytechnology.co.uk)

