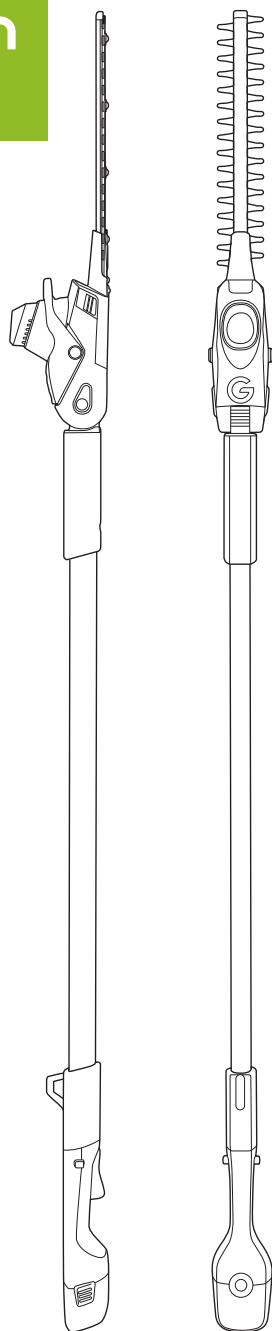




Gtech



Cordless Hedge Trimmer
Model number: HT3.0

OPERATING MANUAL

IMPORTANT SAFEGUARDS:



**IMPORTANT: READ ALL INSTRUCTIONS BEFORE USE.
RETAIN INSTRUCTIONS FOR FUTURE REFERENCE.**



WARNING: Basic safety precautions should always be observed when using an electrical appliance to reduce the risk of fire, electrical shock or serious injury.



Do not use in rain or leave outdoors whilst raining.

Personal safety:

- Only use the hedge trimmer in the manner intended and for trimming hedges as described in this manual.
- This appliance is not intended for use by persons (including children) with reduced physical, sensory or mental capabilities or lack of experience or knowledge.
- Keep out of reach of children and animals at all times. Keep children and bystanders away while operating a power tool. Distractions can cause you to lose control.
- Pay special attention to the hazards posed to third parties by the reach working radius. Always be aware of your surroundings and stay alert for possible hazards.
- Stay alert, watch what you are doing and use common sense when operating a power tool.
- The operator is responsible for accidents or hazards occurring to other people at their property.
- Do not use power tools while you are tired or under the influence of drugs, alcohol or medication. This may result in serious personal injury.
- Do not expose this hedge trimmer to rain or wet conditions. Water entering a power tool will increase the risk of electric shock.
- Keep your work area clean and well-lit. Cluttered or dark areas invite accidents.
- Only use in daylight or good artificial light.
- Always be sure of your footing on ladders, slopes or in slippery conditions. Do not over-reach or use this hedge trimmer on excessively steep slopes.
- Check the hedge and area where the hedge trimmer is being used for any objects, such as wire fences, that could damage or jam the trimmer blade.
- Dress appropriately. Do not wear loose clothing or jewellery and keep hair, clothing and gloves away from moving parts. Do not operate when barefoot or wearing open-toed shoes.
- Use protective personal equipment such as safety glasses, non-skid safety shoes and sturdy gloves to reduce the risk of personal injury.
- Keep all body parts, especially hands and feet, away from the blade at all times.
- Do not run with the hedge trimmer.
- When operating the hedge trimmer, ensure that both hands are correctly positioned on the handle.
- Do not operate the hedge trimmer if it is incomplete or has unauthorised modifications.
- Warning: the blade will continue to move after the motor is switched off.
- Remove the battery and ensure the motor and blade have stopped turning before: cleaning; clearing a blockage; checking or carrying out maintenance on the hedge trimmer.
- Avoid accidental starting. Ensure the switch is in the 'Off' position before picking up or carrying the hedge trimmer.

- Carry the hedge trimmer by the handle with the blade stopped.
- When transporting or storing the hedge trimmer, always fit the protective blade cover.
- Never operate the trimmer with damaged guards.
- Keep the product and all accessories away from hot surfaces.
- Never modify the hedge trimmer in any way.

Electrical safety:

- Do not operate this hedge trimmer in explosive atmospheres, such as in the presence of flammable liquids, gases or dust. Power tools create sparks which may ignite the dust or fumes.
- Do not use the hedge trimmer when a thunderstorm is approaching.
- Avoid body contact with earthed or grounded surfaces, such as pipes, radiators, ranges and refrigerators. There is an increased risk of electric shock if your body is earthed or grounded.
- Do not overreach. Keep proper footing and balance at all times. This enables better control of the hedge trimmer in unexpected situations.
- Do not expose the hedge trimmer to rain or wet conditions.
- Do not handle the charger or hedge trimmer with wet hands.
- Before charging, check the power supply and charger cables for signs of damage or ageing.
- Do not overload the hedge trimmer. For safety, the hedge trimmer will automatically cut out if the motor becomes overloaded. If this occurs, wait a few seconds for the cut out to reset and then use lighter cuts to trim the hedge.

Battery safety:

- This product contains Li-ion batteries. Do not incinerate batteries or expose to high temperatures, as they may explode.

- Do not abuse the charger cord. Never use the charger cord for carrying, pulling or unplugging the power tool. Keep the charger cord away from heat, oil, sharp edges or moving parts. Damaged or entangled charger cords increase the risk of electric shock.
- Use only with the battery pack supplied.
- Do not attempt to use charger with any other product or to charge this product with any other charger.
- Recharge only with the charger specified by the manufacturer. A charger that is suitable for one type of battery pack may create a risk of injury and fire when used with another battery pack.
- Do not charge the battery when the surrounding air temperature or the battery pack is below 0°C or above 35°C.
- After heavy use or in high temperatures, the battery may become warm. Allow the product to cool for 30 minutes before charging.
- Leaks from battery cells can occur under extreme conditions. If the liquid gets on your skin, wash the area immediately with soap and water. If the liquid gets into your eyes, flush them immediately with cold water for a minimum of 10 minutes and seek urgent medical attention.
- Do not store the battery outside or in cold conditions for prolonged periods of time.
- When the battery pack is not in use, keep it away from other metal objects, like paper clips, coins, keys, nails, screws or other small metal objects, that can make a connection from one terminal to another. Shorting the battery terminals together may cause burns or a fire.
- Do not use hedge trimmer continuously with multiple batteries without a minimum of 60 minutes of rest time in between uses.

Training:

- Read the instructions carefully. Be familiar with the controls and the correct use of the hedge trimmer.
- Never allow children or people unfamiliar with these instructions to use the hedge trimmer. Local regulations can restrict the age of the operator.
- Keep in mind that the operator or user is responsible for accidents or hazards occurring to other people or their property.

Preparation:

- Before use, always visually inspect the hedge trimmer for damages.
- Never operate the hedge trimmer while people, especially children, or pets are nearby.

Operation:

- Wear eye protection and stout shoes at all times while operating the hedge trimmer. Use protective personal equipment such as safety glasses, non-skid safety shoes and sturdy gloves to reduce the risk of personal injury.
- Avoid using the hedge trimmer in bad weather conditions, especially when there is a risk of lightning.
- Switch on the motor only when the hands and feet are away from the cutting means.
- Always disconnect the hedge trimmer from the removable battery: whenever the hedge trimmer is left unattended; before clearing a blockage; before checking, cleaning or working on the hedge trimmer; after striking a foreign object; whenever the hedge trimmer starts vibrating abnormally.
- Always ensure that the ventilation openings are kept clear of debris.
- Keep all parts of the body away from the cutter blade. Do not remove cut material, or hold material to be cut, when blades are moving. Make sure the switch is

off when clearing jammed material. A moment of inattention while operating the hedge trimmer may result in serious personal injury.

- Do not operate product when ambient temperature is above 35 degrees.
- Carry the hedge trimmer by the handle with the cutter blade stopped. When transporting or storing the hedge trimmer, always fit the cutting device cover. Proper handling of the hedge trimmer will reduce possible personal injury from the cutter blades.
- Hold the hedge trimmer by its insulated gripping surfaces only, because the cutter blade may contact hidden wiring. Cutting blades contacting a 'live' wire may make exposed metal parts of the power tool 'live' and could give the operator an electric shock.
- Do not use the hedge trimmer if the switch does not turn it on and off. Any power tool that cannot be controlled with the switch is dangerous and must be repaired.
- Disconnect the charger from the hedge trimmer and the battery pack from the power tool before making any adjustments, changing accessories or storing the hedge trimmer. Such preventive safety measure reduces the risk of starting the hedge trimmer accidentally.
- Store idle power tools out of way of children and do not allow persons unfamiliar with the hedge trimmer or these instructions to operate the power tool. Hedge trimmers are dangerous in the hands of untrained users.
- Maintain the hedge trimmer. Check for misalignment or binding of moving parts, breakage of parts and any other condition that may affect the power tool's operation. If damaged, have the hedge trimmer repaired before use.

Many accidents are caused by poorly maintained power tools.

- Keep cutting tools sharp and clean. Properly maintained cutting tools with sharp cutting edges are less likely to bind and are easier to control.
- Use the hedge trimmer, accessories and tool bits etc in accordance with these instructions, taking into account the working conditions and the work to be performed. Use of the hedge trimmer for operations different from those intended could result in a hazardous situation.

Maintenance and storage:

- Disconnect the hedge trimmer from the removable battery before carrying out maintenance or cleaning work.
- Use only the manufacturer's recommended replacement parts and accessories.
- Inspect and maintain the hedge trimmer regularly. Have the hedge trimmer repaired only by an authorised repairer.
- When not in use, store the hedge trimmer out of the reach of children.

Service:

- Do not use the hedge trimmer if the switch does not turn it on or off. If hedge trimmer cannot be controlled by the switch it could be dangerous and therefore must be replaced.
- Check for misalignment or binding of moving parts, breakage of parts and any other condition that may affect the trimmers operations. If damaged, have the power tool repaired or replaced.
- Check that the blade is clean and without damage. If the blade becomes worn, a replacement should be fitted before use.
- Wear protective gloves when handling or cleaning the blade.
- Before using the hedge trimmer, and after any impact, check for signs of wear and damage or replace as necessary.
- Always ensure that the ventilation openings are kept clear of debris.
- Do not attempt to repair any damaged parts on the hedge trimmer unless you are qualified to do so.

Intended use:

- **This product is intended for DOMESTIC USE ONLY.**

Warning label descriptions



General hazard safety alert.



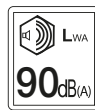
Read instruction manual before use



Wear eye protection when using this product.



Wear ear protection when using this product.



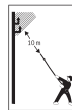
Measured sound power level: $L_{WA} = 87.1 \text{ dB(A)}$
 $K=3\text{dB(A)}$

Guaranteed sound power level: 90 dB(A)

Note: Measured noise values determined according to 2000/14 EC (1.60m height, 1.0m distance away).



Do not use in rain or leave outdoors whilst raining.

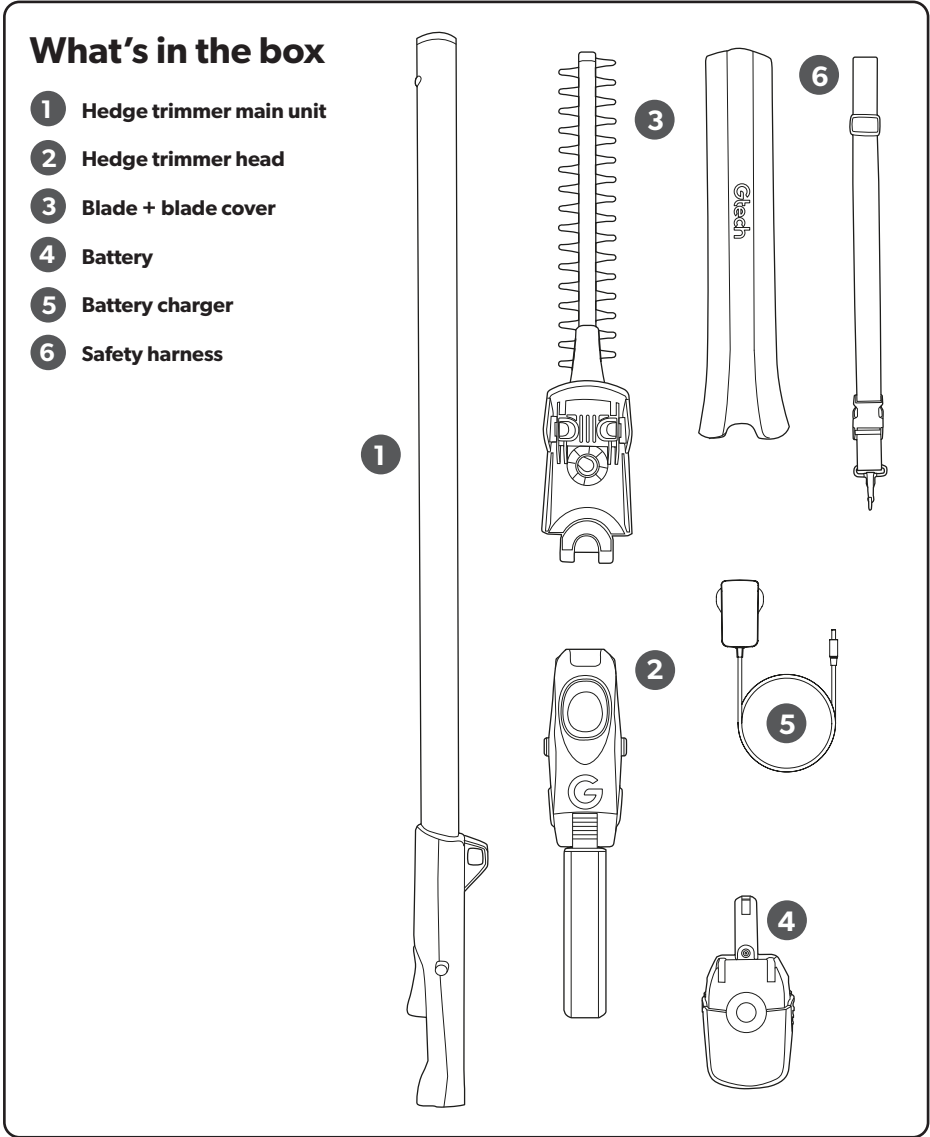


Risk of fatal injury due to electric shock!
Keep at least 10m away from electricity lines.

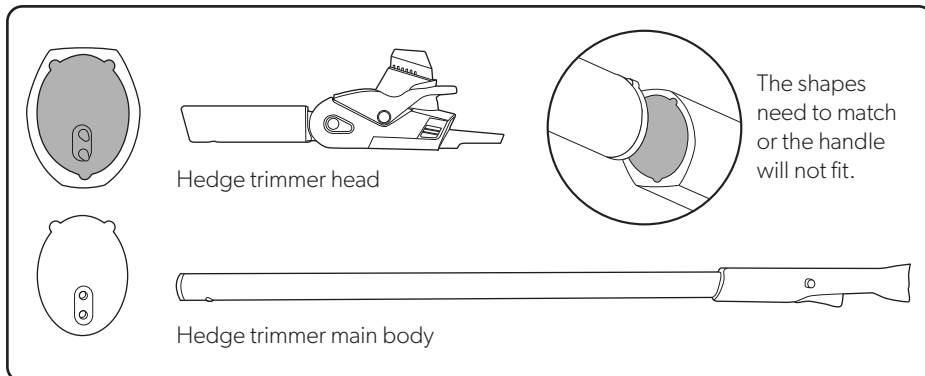
Thank you for choosing a Gtech Hedge Trimmer

"I started Gtech to create sensible, easy to use products, which do a great job. Your opinion is important to us. Please take the time to write a review of your new Hedge Trimmer at Trustpilot.co.uk. We will use your feedback to improve our products and services and let other people know what it's like to be part of the Gtech family."

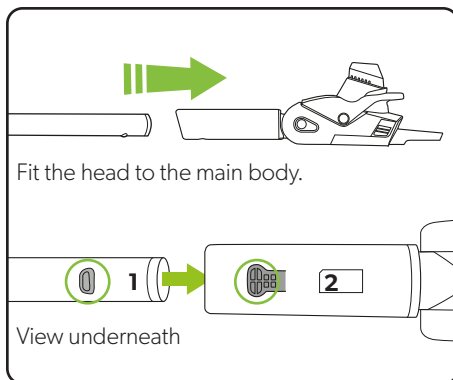
Nick Grey – Inventor, Owner of Gtech



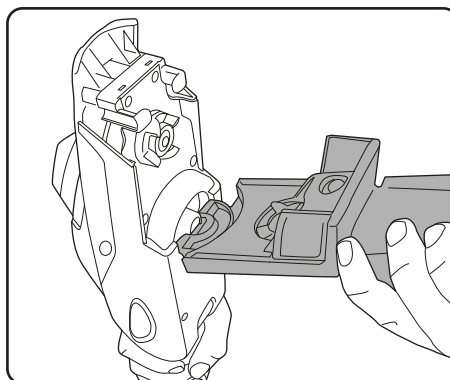
Assembly



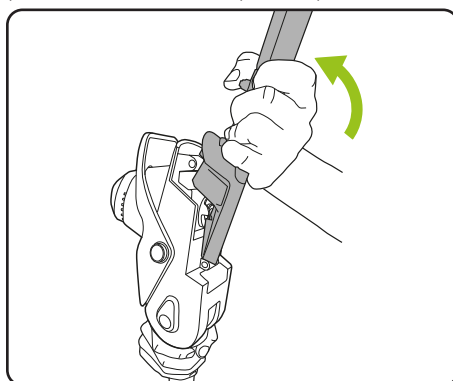
When inserting the body into the hedge trimmer head, ensure the body is the right way up. The shapes need to match or the handle will not fit.



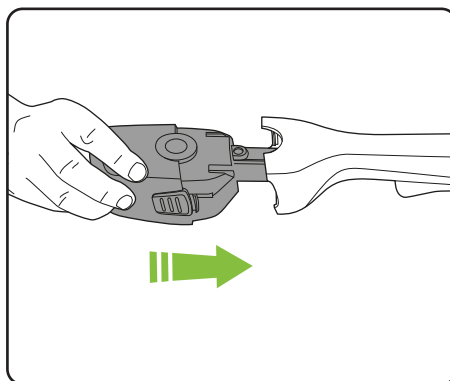
When the pole is fully inserted, the button (1) will pop up into the aperture (2). To remove, press the button (1) and pull the pole.



With the blade cover still on, connect the hedge trimmer blade to the head.

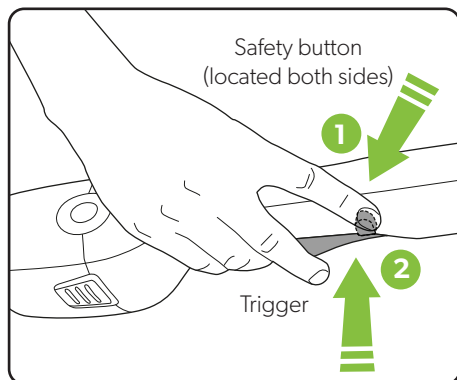


It will lock (click) securely into place.

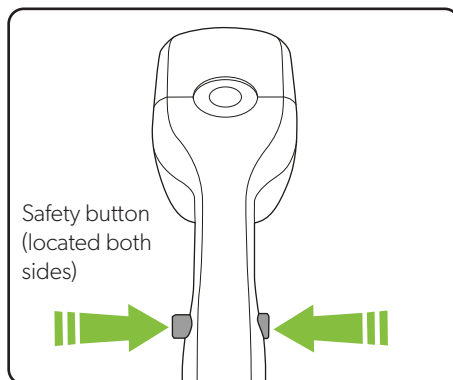


Insert the battery - it will click once fully inserted.

Operation



Push and hold the safety button on either side, then press the trigger to operate.

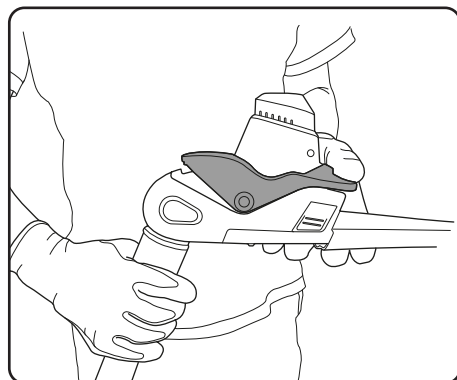


When you release the trigger, the hedge trimmer will stop.

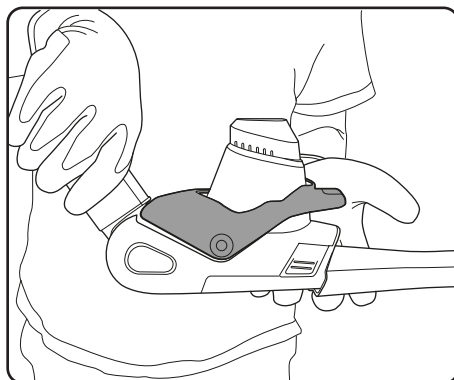
Rotating the hedge trimmer blade

WARNING: to reduce risk of personal injury, ensure the trimmer is switched off and the blade has stopped before adjusting the cutting head.

WARNING: ensure the cutting head is securely locked in position before starting the trimmer.

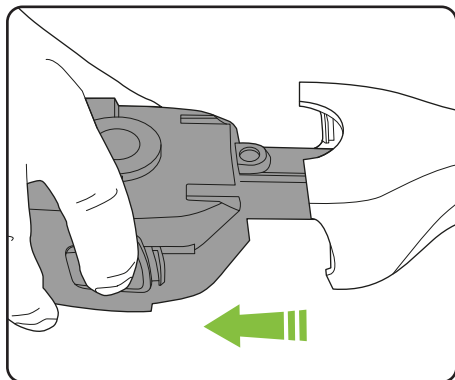


Remove the battery and ensure that the blade cover is on before continuing the next step. Depress the lever as shown. The head will now rotate freely.

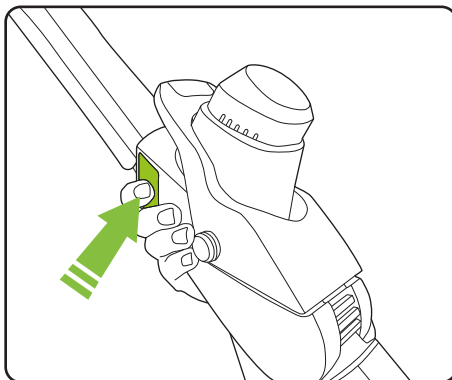


You can now rotate the head whilst pressing down on the lever. Release the lever and it will lock into place. This feature does NOT work with the branch-cutter.

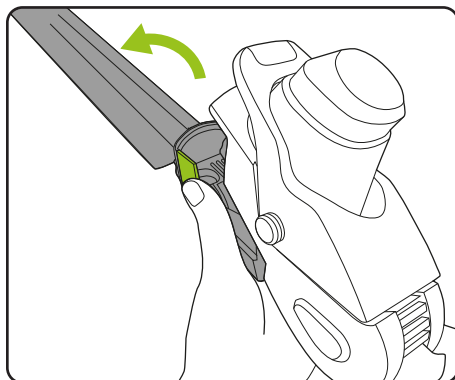
Removing the blade



Remove the battery and ensure the cover is on the blade.

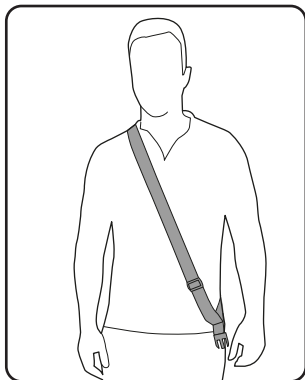


Press the green buttons on either side of the trimmer head.

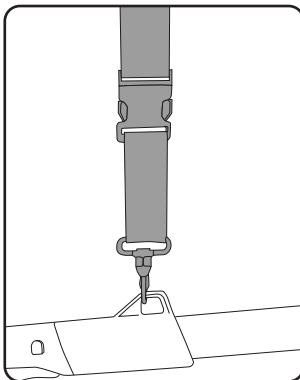


The blade will pivot away from the head.

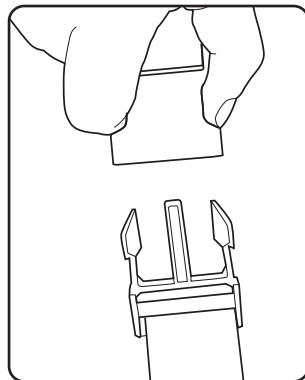
Safety harness



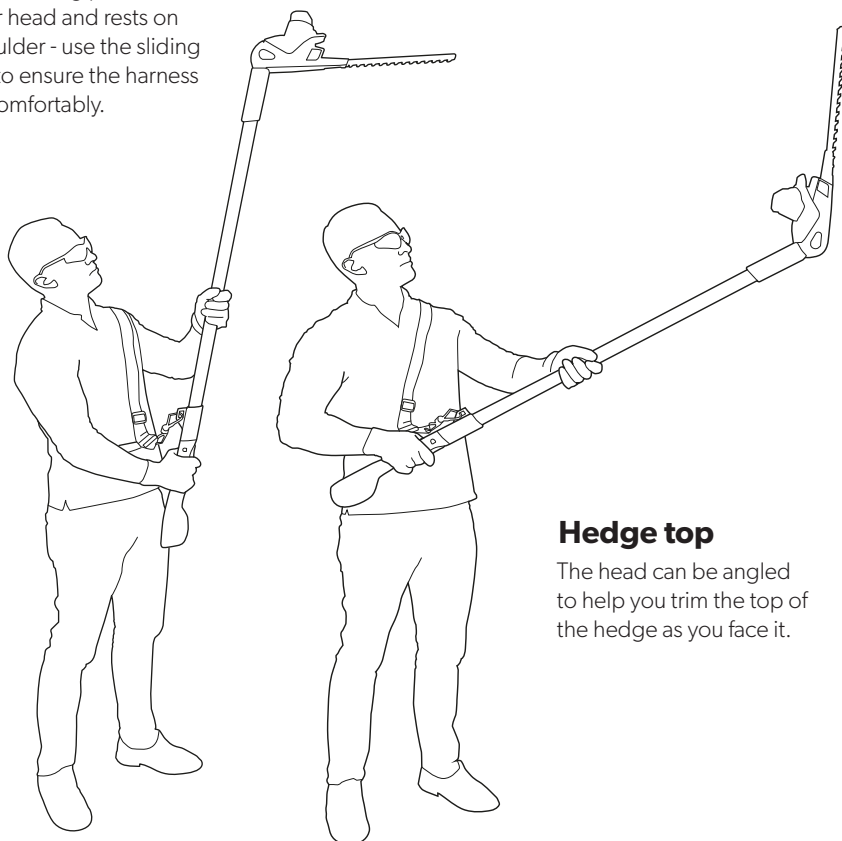
The harness is included as a safety feature for use with the branch cutter and the hedge trimmer. The sling passes over your head and rests on your shoulder - use the sliding adjuster to ensure the harness fits you comfortably.



Attach the clip to the loop on the of the handle and clip the harness to this.



In an emergency situation, the harness clip can be released quickly.



Hedge top





The head can be angled to help you trim the top of the hedge as you face it.

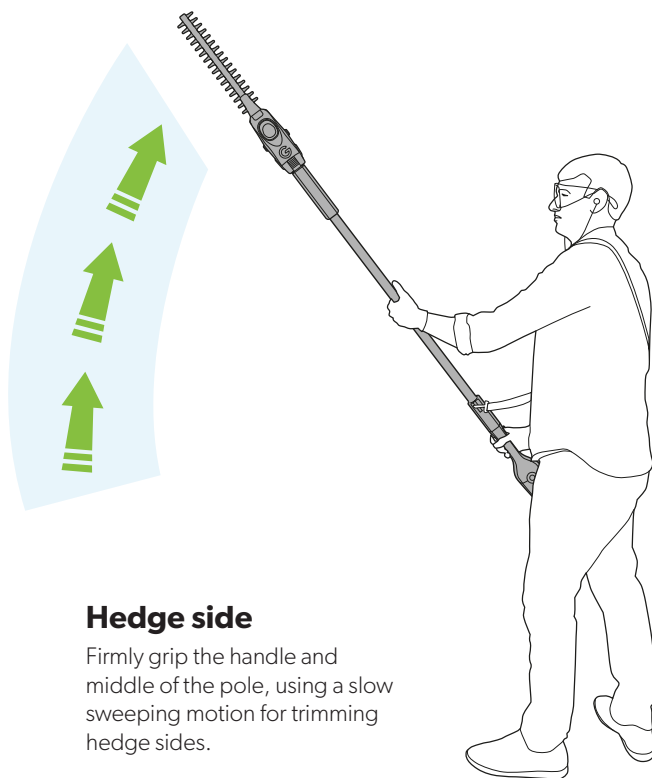
Using your hedge trimmer

Hold the trimmer away from your body using both hands and stand on a solid and secure surface.

The double-edged blade allows you to cut with either a side-to-side or up and down motion.

When cutting, move slowly and steadily so that stems are fed directly into the blade. Cut the sides of the hedge first and then the top. To keep the sides of the hedge flat, cutting upwards with the growth is recommended.

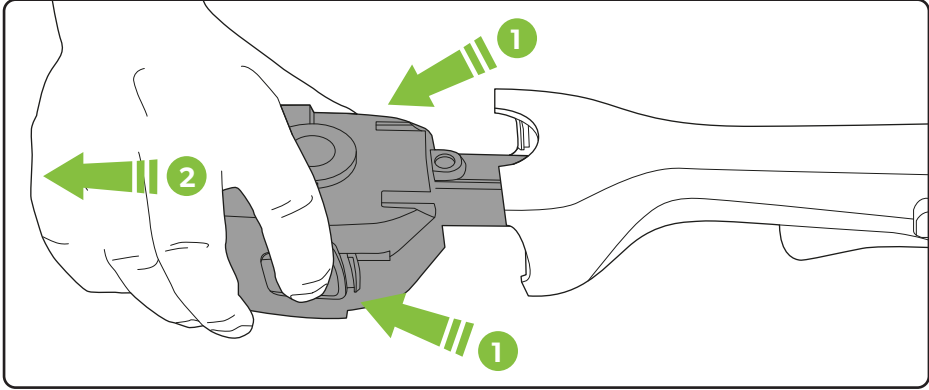
-  **WARNING:** risk of electric shock. Pay attention to the position of overhead cables.
-  **WARNING:** to reduce the risk of personal injury, always wear eye protection. Personal protective equipment such as sturdy gloves and non-slip shoes are recommended.
-  **WARNING:** to reduce risk of injury from accidental start-up of the trimmer, always ensure that the protective blade guard is fitted when the trimmer is not in use, and when being transported, handled or stored.
-  Pay attention to the hazard posed to third parties from the increased working area of the trimmer.



Hedge side

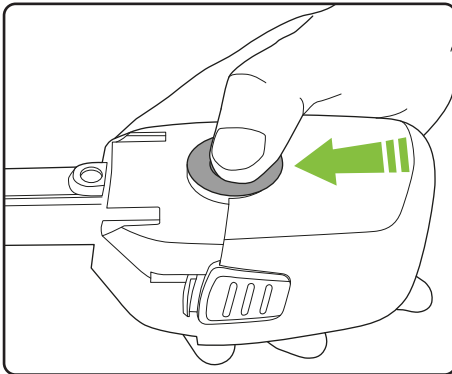
Firmly grip the handle and middle of the pole, using a slow sweeping motion for trimming hedge sides.

Removing the battery for charging

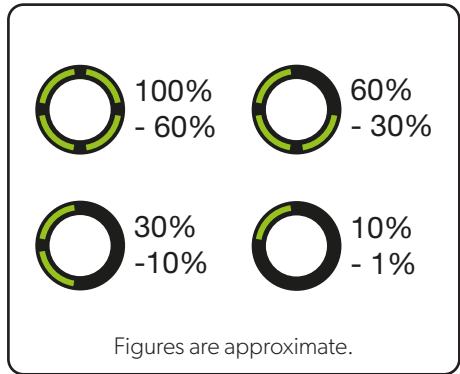


Press both buttons at the same time and pull to remove the battery.

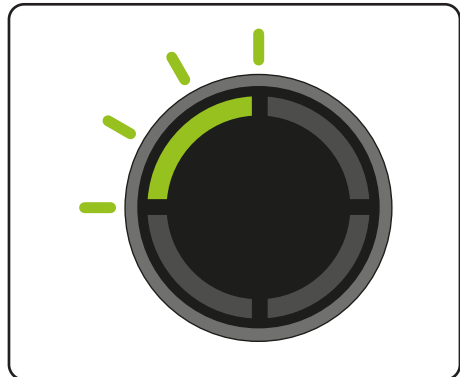
Checking battery charge status



Press the button to check how much charge there is in the battery.

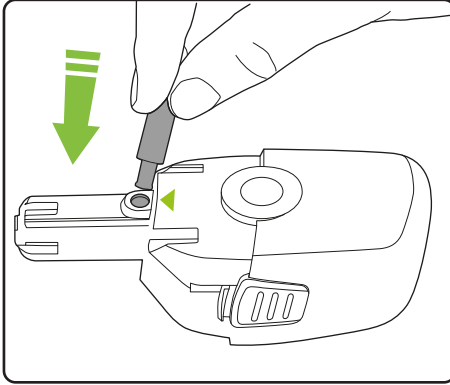


The number of lit LEDs shows the charge.

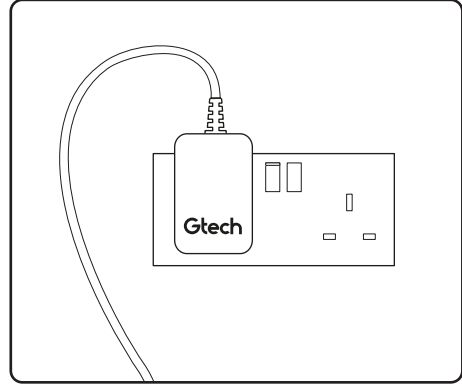


When there is no power left, the final LED will flash for 10 seconds then go out.

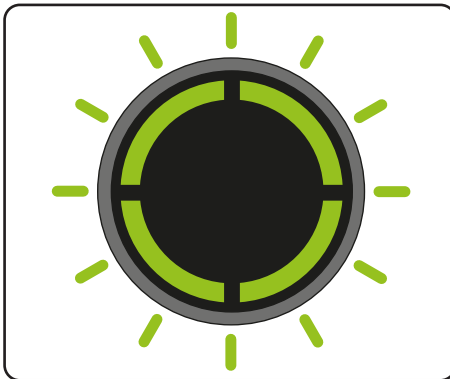
Charging the battery



Connect the charger to the battery where indicated.



Plug the charger into an ordinary plug socket.



While charging, the LEDs will progressively pulse until all 4 are lit.



The battery can be charged from flat in 4 hours. The state-of-charge indicator will show 4 solid green lights when it is fully charged.

Reconnecting battery to hedge trimmer

For reconnecting the battery to your hedge trimmer, please refer to the instructions on page 9 of this manual.

Product Care



Wear protective gloves when handling or cleaning the blade.



To reduce risk of injury, ensure that protective blade guard is fitted when the trimmer is not in use, and when being transported, handled or stored.

To ensure that your HT3.0 gives you a long and reliable service, carry out the following maintenance regularly:

- Check for obvious defects, such as loose, dislodged, worn or damaged blades, loose fixings, and worn, damaged, or loose parts.
- Check that all covers and guards are correctly fitted and undamaged.
- Always clean the cutting blade after use and apply a lubricating oil or spray before storage.
- During longer cutting periods, it is recommended to lubricate the blade. This will improve cutting performance and maximise the run-time.
- Before use, check the condition of the cutting edges of the blade and check that the blade fixings are secure.
- Do not use water, solvents, or polishes to clean the trimmer. Wipe clean with a dry cloth.
- Do not use abrasive materials to clean the product, and do not immerse it in water.
- Store the hedge trimmer in a secure, dry place, out of reach of children. Do not expose it to moisture.

PLEASE NOTE: if the product needs to be repaired or replaced, only use replacement parts supplied by the manufacturer.


Spare parts can be purchased from Grey Technology Ltd:

tel : **01905 345 891** **www.gtech.co.uk**

Troubleshooting

Trimmer fails to operate	<ol style="list-style-type: none"> 1. Recharge battery. 2. Check switch. It will click if operating correctly. 3. Blade is jammed.
Cutting blade will not cut	<ol style="list-style-type: none"> 1. Blade is either worn or damaged. 2. Replace blade.
Blade will not move	<ol style="list-style-type: none"> 1. Clean and lubricate blade. 2. Replace blade.
Cutting time has reduced	<ol style="list-style-type: none"> 1. Use a lighter cutting action and cut in several stages. 2. Fully discharge and recharge battery. 3. Clean and lubricate blade. 4. Replace blade.
Trimmer stops when cutting	<ol style="list-style-type: none"> 1. Wait for automatic cut-out to reset. Use a lighter cutting action. 2. Check blade and remove any debris. 3. Charge battery.
LEDs show solid red	<ol style="list-style-type: none"> 1. The hedge trimmer has jammed. 2. Check blade and remove any debris.
<p>If this doesn't solve your problem, don't worry, we will help. Go to www.gtech.co.uk or call 01905 345 891</p>	

HEDGE TRIMMER TECHNICAL SPECIFICATION

Blade cutting length	309mm
Blade cutting width	15mm
No load speed	1200min ⁻¹
Battery	18V DC 2000mAh Li-ion
Charging period	4 hours
Battery charger output	21.6V  0.5A 10.8W
Battery charger input	100-240V~50/60Hz
Measured sound power level, L _{WA}	L _{WA} =87.1 dB(A), uncertainty K=3dB(A)
Guaranteed sound power level, L _{WA}	90 dB(A)
Weight	2.4kg
Vibration	Front handle a _h = 0.82m/s ² Uncertainty k= 0.5 m/s ² Rear handle a _h = 0.65 m/s ² Uncertainty k= 0.5 m/s ²

Environmental and product recycling

The  symbol indicates that this product is covered by legislation for waste electrical and electronic products (EN2012/19/EU)

When the product has reached the end of its life, please do not dispose of it with general household waste. Consider the environment and take it to a recognised recycling facility.

The product contains a Li-ion battery which should not be disposed of with general household waste. The battery should be disposed of properly with the product at a recycling facility.

Call your local council, civic amenity site or recycling centre for information on the disposal and recycling of electrical products.

Alternatively, visit www.recycle-more.co.uk for advice on recycling and to find your nearest recycling facilities.



WARRANTY – TERMS AND CONDITIONS

The warranty on your HT3.0 is 2 years from date of purchase. If your Gtech HT3.0 breaks, don't worry, we're here to help. Go to www.gtech.co.uk or call **01905 345 891** for assistance.

WHAT ISN'T COVERED

Gtech does not guarantee the repair or replacement of the product as a result of:

- Normal wear and tear.
- Accidental damage, faults caused by negligent use or care, misuse, neglect, careless operation or handling of the hedge trimmer which is not in accordance with the HT3.0 operating manual.
- Use of the hedge trimmer for anything other than normal domestic garden purpose.
- Use of parts and accessories which are not genuine Gtech components.
- Faulty installation (except where installed by Gtech).
- Modifications of any type.
- Repairs or alterations carried out by parties other than Gtech or its authorised agents.
- If you are in doubt as to what is covered by your warranty, please call the Gtech Customer Care Helpline on 01905 345 891

SUMMARY

- The guarantee becomes effective at the date of purchase (or the date of delivery if this is later).
- The battery is covered by this guarantee.
- You must provide proof of delivery/ purchase before any work can be carried out on the hedge trimmer. Without this proof, any work carried out will be chargeable. Please keep your receipt or delivery note.
- All work will be carried out by Gtech or its authorised agents.
- Any parts that are replaced will become the property of Gtech.
- The repair or replacement of your hedge trimmer is under guarantee and will not extend the warranty period.
- The guarantee provides benefits which are additional to, and do not affect, your statutory rights as a consumer.

EC Declaration of Conformity

We, manufacturer/importer

Grey Technology Ltd
Brindley Road
Warndon
Worcester
WR4 9FB

declare that the product

HT3.0 Cordless Hedge Trimmer

complies with the essential health and safety requirements of the following directives:

- 2014/30/EU - EMC Directive.
- 2006/42/EC - Machinery Directive
- 2000/14/EC - Noise emission in the environment by equipment for use outdoors Directive.
 - Conformity assessment procedure as per ANNEX VI.
 - Measured Sound Power Level = 87.1 dB(A), uncertainty $K=3\text{dB(A)}$
 - Declared Guaranteed Sound Power Level = 90 dB(A)
- 2011/65/EU - RoHS directive

Technical documentation holder: Grey Technology Ltd, WR4 9FB

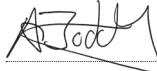
Standards and technical specifications referred to :

EN 60745-1:2009+A11:2010
EN 60745-2-15:2009+A1:2010
EN ISO 10517:2009+A1:2013
EN 55014-1:2017
EN 55014-2:2015
IEC 62133-2:2017

Dokumentationsbevollmächtigter :
Authorized person for the compilation
of the technical documentation:

Andrew Boddy

Herstellerunterschrift/Datum:
Authorized Signature/Date/Place:



03.2020 Worcester, UK

Angaben zum Unterzeichner:
Title of Signatory:

Technical Manager



Gtech

Grey Technology Limited

Brindley Road, Warndon, Worcester WR4 9FB

email: support@gtech.co.uk

telephone: 01905 345891

www.gtech.co.uk

CPN4237