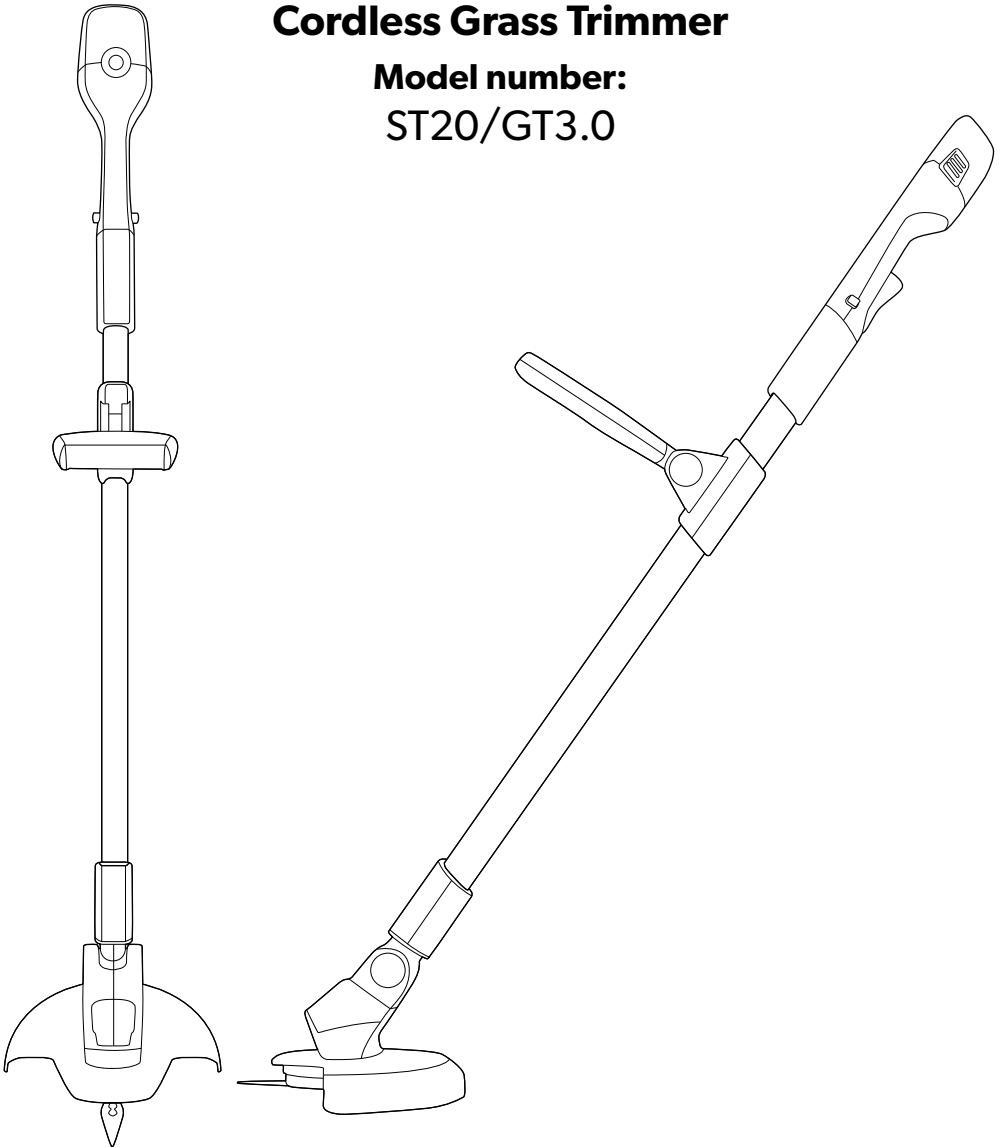


Gtech

Cordless Grass Trimmer

**Model number:
ST20/GT3.0**



OPERATING MANUAL

IMPORTANT SAFEGUARDS:



**IMPORTANT: READ ALL INSTRUCTIONS BEFORE USE.
RETAIN INSTRUCTIONS FOR FUTURE REFERENCE.**

WARNING: Basic safety precautions should always be observed when using an electrical appliance to reduce the risk of fire, electrical shock or serious injury.



Do not use in rain or leave outdoors whilst raining.

Personal Safety:

- Only use the trimmer in the manner intended and for trimming grass as described in this manual.
- Keep out of reach of children and animals at all times.
- Only use in daylight or good artificial light.
- Always be sure of your footing on uneven ground, slopes or in slippery conditions.
- Do not over-reach or use on excessive steep slopes.
- Remove any stones, loose debris and other objects from the cutting area.
- Pay special attention to the hazards posed to bystanders by thrown or flyaway objects.
- Stay alert, watch what you are doing and use common sense when operating a power tool.
- Do not use power tools while you are tired or under the influence of drugs, alcohol or medication. This may result in serious personal injury.
- Always be aware of your surroundings and stay alert for possible hazards.
- Use protective personal equipment such as safety glasses, non-skid safety shoes, sturdy gloves to reduce the risk of personal injury.
- Do not operate when barefoot or wearing open toed shoes. Always wear substantial footwear and long trousers.
- Dress appropriately. Do not wear loose clothing or jewellery and keep hair, clothing and gloves away from moving parts.
- Avoid accidental starting. Ensure the switch is in the off position before picking up or carrying the trimmer.
- Do not run with the trimmer.
- When operating the trimmer ensure that both hands are correctly positioned on the handle.
- Do not operate the trimmer if it is incomplete or has unauthorised modifications.
- Keep all body parts, especially hands and feet, away from the blade at all times.
- Warning, the blade will continue to move after the motor is switched off.
- Ensure that the motor has fully stopped before cleaning, clearing a blockage, checking, or carrying out maintenance on the trimmer.
- Carry the grass trimmer by the handle with the blade stopped.
- The operator is responsible for accidents or hazards occurring to other people at their property.
- Never operate the trimmer with damaged guards or without the guards in place.
- This appliance is not intended for use by persons (including children) with reduced physical, sensory or mental capabilities or lack of experience or knowledge.
- Keep the product and all accessories away from hot surfaces.

- Never modify the trimmer in any way.
- Never fit metal cutting blades.

Electrical safety:

- Do not operate trimmers in explosive atmospheres, such as in the presence of flammable liquids, gases or dust. Trimmers create sparks, which may ignite the dust and fumes.
- Do not use the trimmer when a thunderstorm is approaching.
- Avoid body contact with earthed or grounded surfaces, such as pipes. There is an increased risk of electric shock if your body is earthed or grounded.
- Do not expose trimmers to rain or wet conditions.
- Do not handle the charger or the trimmer with wet hands.
- Before charging check the power supply and charger cables for signs of damage or ageing.
- Do not overload the trimmer. Forcing the trimmer to cut may damage the motor. For safety the trimmer will automatically cut out if the motor becomes overloaded. If this occurs, wait a few seconds for the cut out to reset and then use lighter cuts to trim the grass.

Battery safety:

- Do not attempt to use the charger with any other product or to charge this product with any other charger.
- This product contains Li-Ion batteries. Do not incinerate batteries or expose to high temperatures, as they may explode.
- Do not charge the battery when the surrounding air temperature or the battery pack is below 0°C or above 45°C.
- After heavy use or in high temperatures the battery may become warm. Allow the product to cool for 30 minutes

before charging.

- Use only with the battery pack supplied.
- Leaks from battery cells can occur under extreme conditions. If the liquid gets on your skin wash immediately with soap and water. If the liquid gets into your eyes, flush them immediately with cold water for a minimum of 10 minutes and seek urgent medical attention.
- Do not store the battery outside or in cold conditions for prolonged periods of time, especially over the winter months.

Training

- Read the instructions carefully. Be familiar with the controls and the correct use of the machine.
- Never allow children or people unfamiliar with these instructions to use the machine. Local regulations can restrict the age of the operator.
- Keep in mind that the operator or user is responsible for accidents or hazards occurring to other people or their property.

Preparation

- Before use, always visually inspect the machine for damaged, missing or misplaced guards or shields.
- Never operate the machine while people, especially children, or pets are nearby.
- Before use, check that a new fresh blade is correctly fitted and the hub screw is tight.

Operation

- Keep supply and extension cords away from cutting means.
- Wear eye protection and stout shoes at all times while operating the machine.
- Avoid using the machine in bad weather conditions especially when there is a risk of lightning.
- Never operate the machine with damaged guards or shields or without guards or shields in place.
- Switch on the motor only when the hands and feet are away from the cutting means.
- Always disconnect the machine from the power supply (removable battery)
 - 1) whenever the machine is left unattended;
 - 2) before clearing a blockage;
 - 3) before checking, cleaning or working on the machine;
 - 4) after striking a foreign object;
 - 5) whenever the machine starts vibrating abnormally.
- Always ensure that the ventilation openings are kept clear of debris.

Maintenance and storage

- Disconnect the machine from the power supply (removable battery) before carrying out maintenance or cleaning work.
- Use only the manufacturer's recommended replacement parts and accessories.
- Inspect and maintain the machine regularly. Have the machine repaired only by an authorised repairer.
- When not in use, store the machine out of the reach of children.

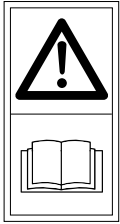
Service:

- Do not use the trimmer if the switch does not turn it on or off. Any power tool that cannot be controlled by the switch is dangerous and must be repaired or replaced.
- Check for misalignment or binding of moving parts, breakage of parts and any other condition that may affect the trimmer's operations. If damaged, have the power tool repaired or replaced.
- Check that the blade is clean and without damage. If the blade becomes worn or damaged, a replacement should be fitted before use.
- Before using the machine and after any impact, check for signs of wear and damage and repair or replace as necessary.
- Always ensure that the ventilation openings are kept clear of debris.
- Have your trimmer serviced by a qualified repair person using only genuine replacement parts. This will ensure that the safety of the trimmer is maintained.
- Do not attempt to repair any damaged parts on the trimmer unless you are qualified to do so.

Intended Use:

- **This product is intended for trimming and edging grass and light foliage.**
- **Avoid prolonged continuous use of the product. It is recommended to periodically rest the product.**
- **Avoid striking foreign objects, such as posts, fences and walls.**
- **This product is intended for DOMESTIC USE ONLY.**

Warning Label Descriptions



General hazard safety alert.

Read instruction manual before use



Do not use in rain or leave outdoors whilst raining.



Measured sound power level: 88.28dB(A)
Guaranteed sound power level: 96dB(A)

Note: Measured noise values determined according to 2000/14 EC amended by 2005/88/EC



Wear eye protection when using this product.



Wear hearing protection when using this product.



Keep bystanders away.

Thank you for choosing a Gtech Grass Trimmer

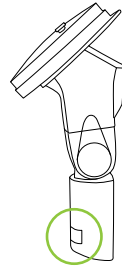
"I started Gtech to create sensible, easy to use products, which do a great job. Your opinion is important to us and we will use your feedback to improve our products and services and let other people know what it's like to be part of the Gtech family."

Nick Grey – Inventor, Owner of Gtech

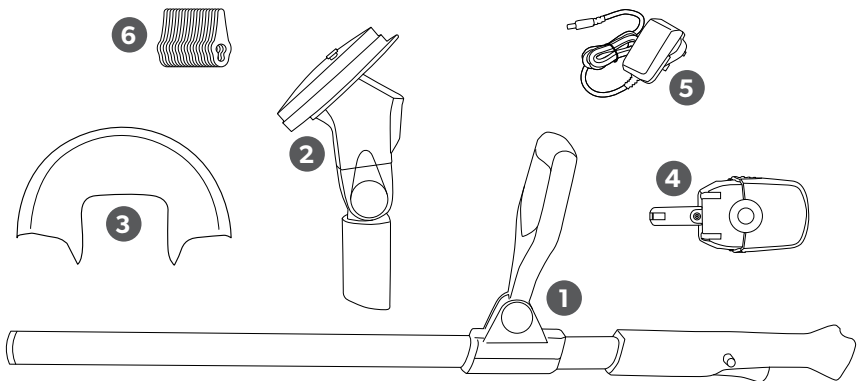
Please take the time to write a review of the Gtech Grass Trimmer by visiting www.gtech.co.uk/product-reviews or if you didn't purchase directly from Gtech please leave a review with the retailer.

Make a note of your product serial number code for future reference. You can find this on the underside of item **2**

---~
---~
---~
---~



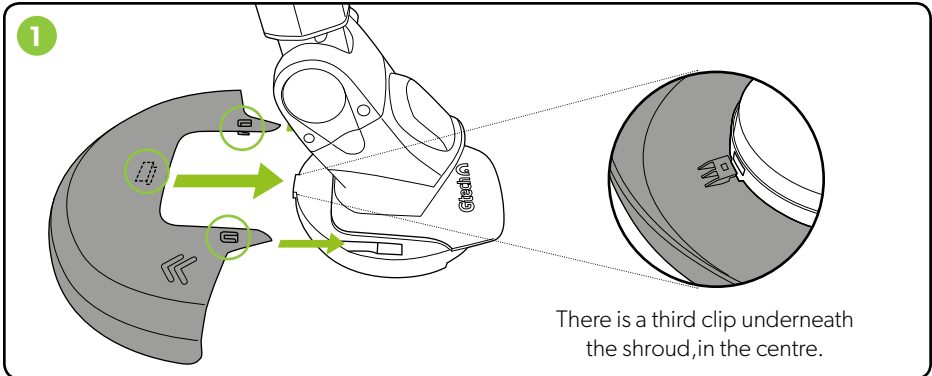
What's in the box



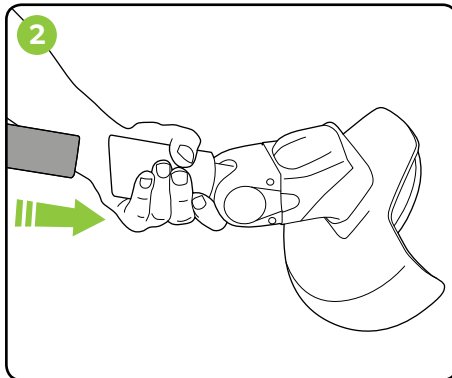
- 1** Grass trimmer main body
- 2** Grass trimmer head
- 3** Grass trimmer shroud

- 4** Battery
- 5** Battery charger
- 6** Bag of blades

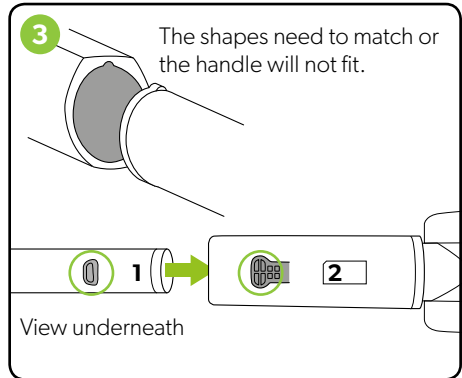
Assembly



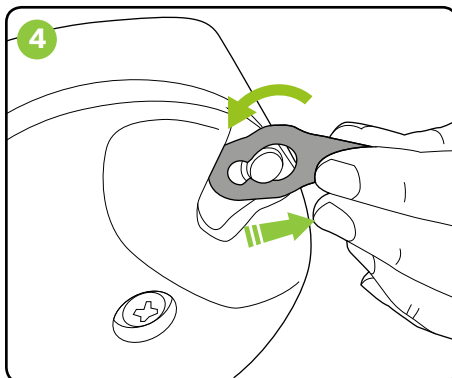
Attach the shroud first. Align all three clips on the shroud to the holes on the trimmer head and simultaneously push them into place. Once on, the shroud cannot be removed.



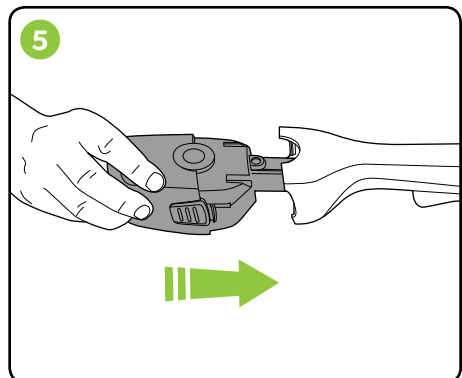
Insert the body pole into the grass trimmer head, ensuring it is the right way up.



When the pole is fully inserted, the button (1) will pop up into the aperture (2)

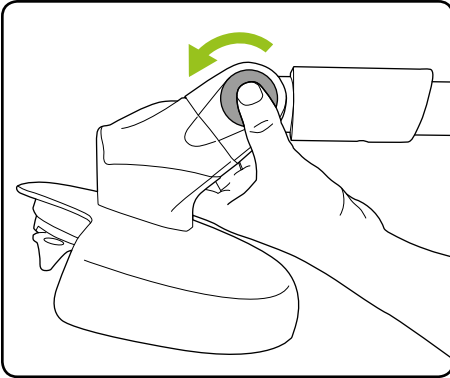


Hook a blade over the pin and pull to securely lock into place.

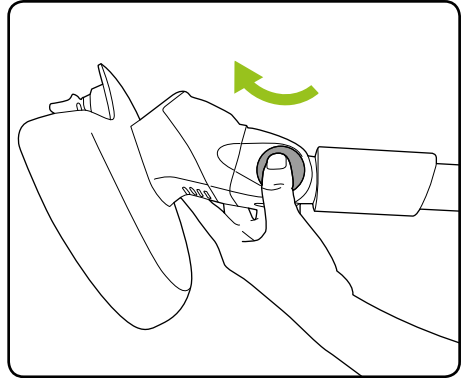


Insert the battery which will click into place.

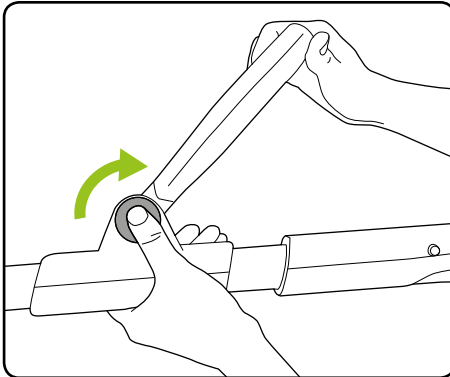
Operation



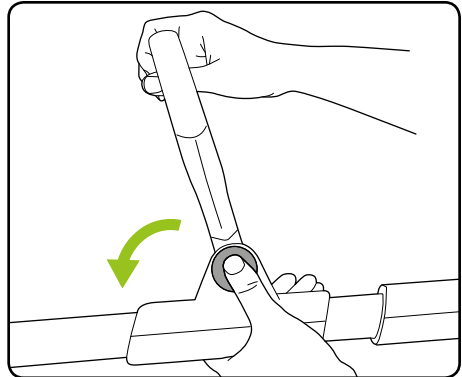
Push the button and rotate the head to the required angle.



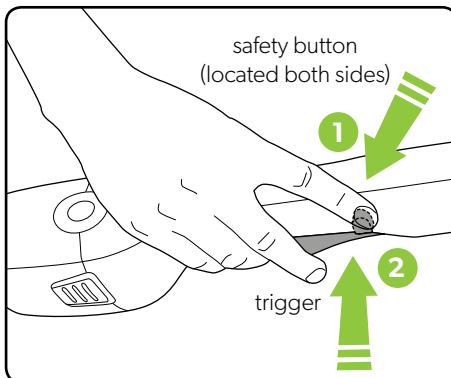
Release the button and ensure the head clicks into a locked position.



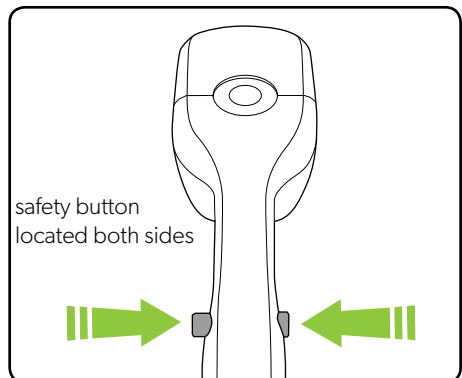
Push the button and rotate the handle to the required angle.



Release the button and ensure the handle clicks into a locked position.

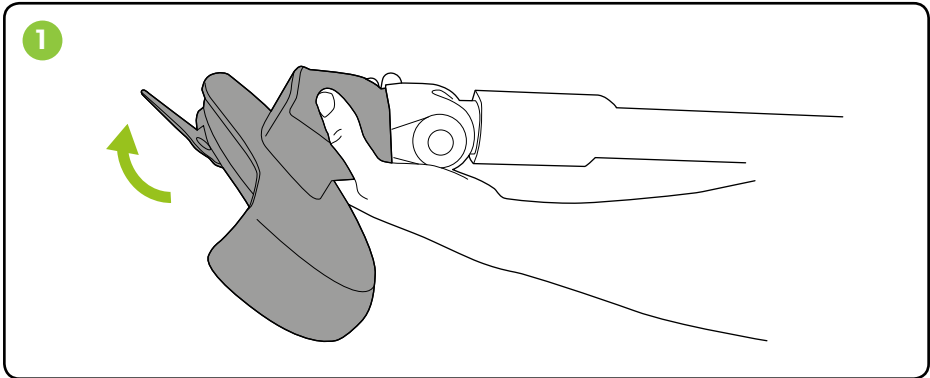


Push and hold the safety button on either side, then press the trigger to operate.

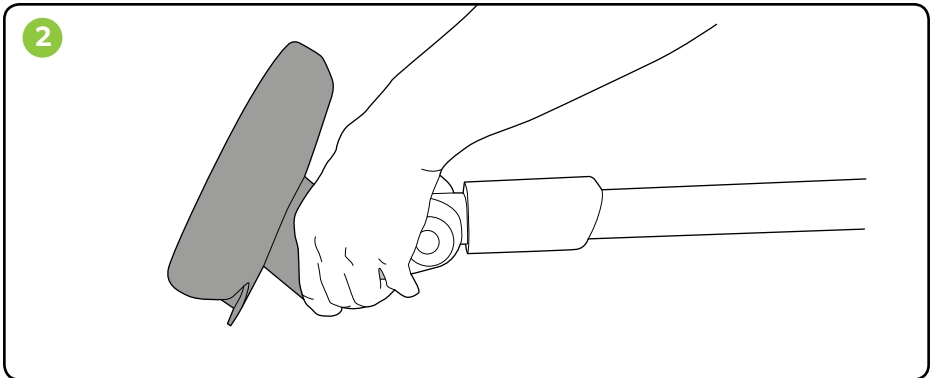


When you release the trigger the trimmer will stop.

Changing to edge trimming mode



Firmly grip the main unit and rotate the head 180°



The head only rotates in one direction.



WARNING: To reduce risk of personal injury, ensure the trimmer is switched off and the blade has stopped before adjusting the cutting head.



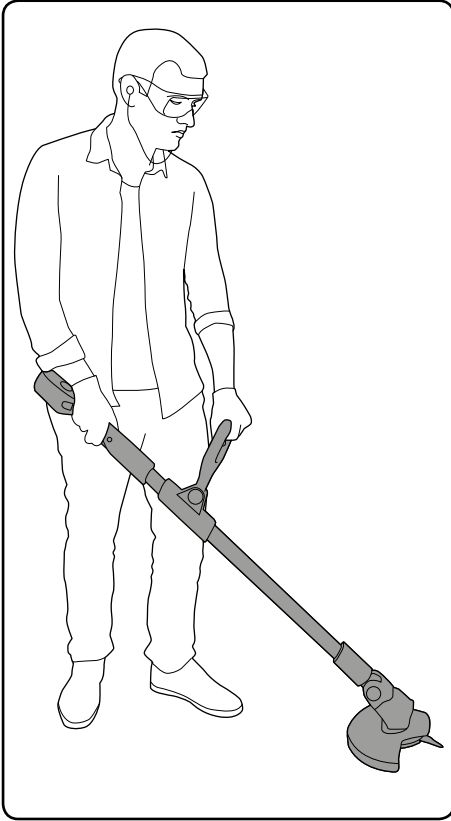
WARNING: Ensure the cutting head is securely locked in position before starting the trimmer.



WARNING: Do not attempt to remove the blade while the unit is running. Wait until the blade has stopped before attempting to remove the blade. Never fit metal blades. Only fit blades recommended by the manufacturer.

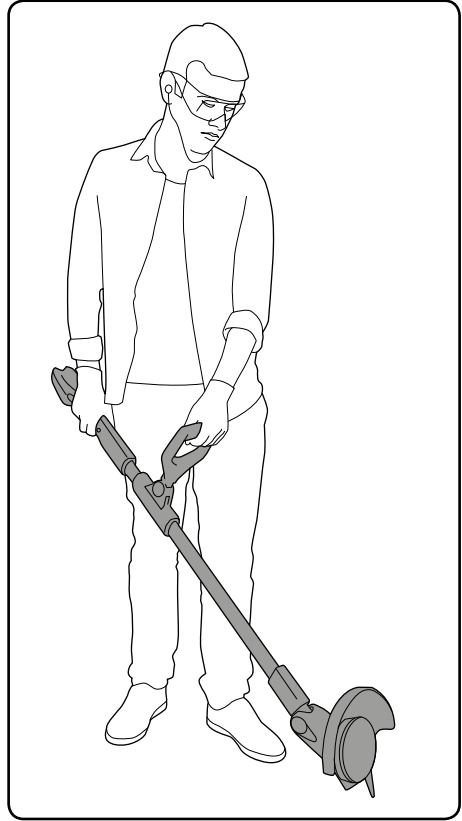
Using your Grass Trimmer

Hold the trimmer away from your body using both hands and stand on a solid and secure surface.



Using to trim grass

Firmly grip both handles, move slowly and steadily using a side to side sweeping motion.



Using to edge

Firmly grip both handles with the head rotated, move slowly to trim the edge of the lawn.



WARNING: Risk of electric shock. Pay attention to the position of garden cables.



WARNING: To reduce the risk of personal injury always wear eye protection. Personal protective equipment such as sturdy gloves and non-slip shoes are recommended.



Pay attention to the hazard posed to third parties from the increased working area of the trimmer.



Always take care when other people are around you. The trimmer may throw out stones and debris at high speed.



Take care not to overload the trimmer. Attempting to force the trimmer to cut may damage the motor. To prevent overloading cut long or difficult foliage in stages with several light cuts.



Take care not to grind the rotating parts against the ground as this will wear parts and cause damage to the trimmer.

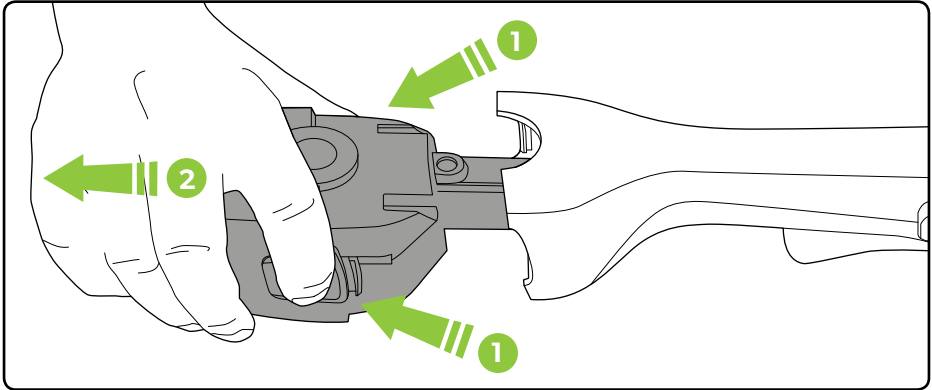


Take care when trimming around objects such as stone or concrete as these can damage the trimmer blade and parts that attach the blade.



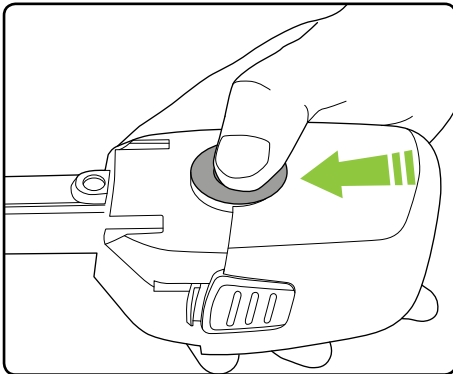
If the blade becomes worn or damaged it should be replaced with a new blade.

Removing the battery for charging



Press both buttons at the same time and pull to remove the battery.

Checking the battery charge status

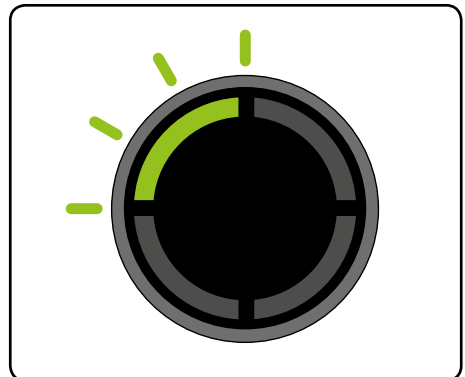


Press the button to check how much charge there is in the battery.



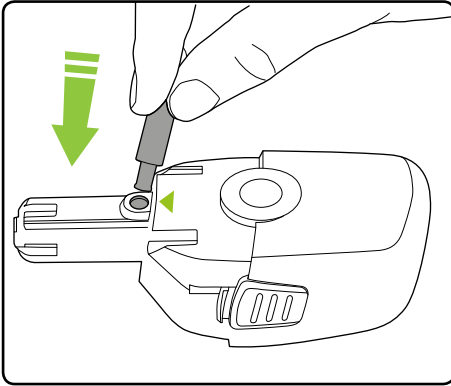
Figures are approximate.

The number of lit LEDs shows the charge.

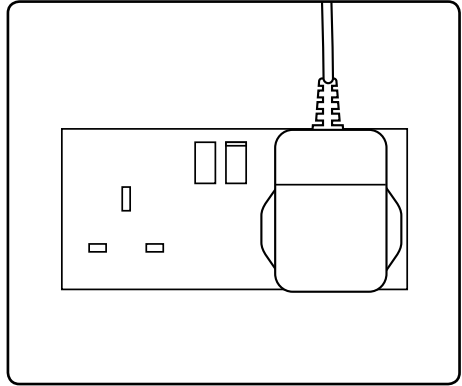


When there is no power left the final LED will flash for 10 seconds and then go out.

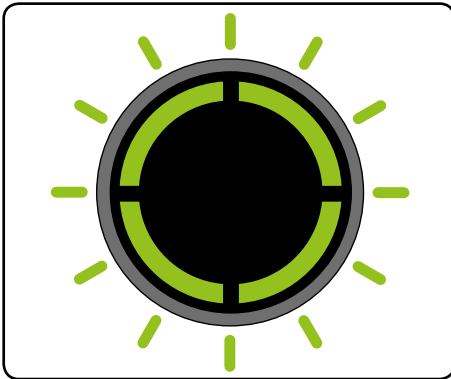
Charging the battery



Connect the charger to the battery where indicated.



Plug the charger into an ordinary plug socket.



While charging the LEDs will progressively pulse until all four are lit.



The battery can be charged from flat in 4 hours. The state of charge indicator will show 4 solid green lights when it is charged.

Reconnecting the battery to the Grass Trimmer

For reconnecting the battery to your grass trimmer, please refer to the instructions on page 7 of this manual.

Product Care

To ensure that your product gives you long and reliable service, carry out the following maintenance regularly:

- Check for obvious defects such as loose, dislodged, worn or damaged blades, loose fixings, and worn, damaged, or loose parts.
- Check that covers and guards are correctly fitted and undamaged.
- Before use check the condition of the cutting edges of the blade and that the blade fixings are secure.
- Do not use water, solvents, or polishes to clean the trimmer. Wipe clean with a dry cloth.
- Do not use abrasive materials to clean the product, and do not immerse it in water.
- Store in a secure, dry place, out of reach of children. Do not expose to moisture.

PLEASE NOTE: If the product needs to be repaired or replaced only use replacement parts supplied by the manufacturer.

Spare parts can be purchased from Grey Technology Ltd:
tel : 01905 345 891 www.gtech.co.uk

Troubleshooting

Trimmer fails to operate	<ol style="list-style-type: none">1. Recharge battery.2. Check switch. It will click if operating correctly.3. Blade is jammed
Cutting blade will not cut	<ol style="list-style-type: none">1. Blade is either worn or damaged.2. Replace blade.
Blade will not move	Replace blade
Cutting time has reduced	<ol style="list-style-type: none">1. Use lighter cutting action and cut in several stages.2. Fully discharge and recharge battery.3. Replace blade.
Abnormal vibrations	<ol style="list-style-type: none">1. Check the hub screw is securely screwed in.2. Check the blade is installed.3. Check if any obstacle is preventing normal rotation of the hub.
Trimmer stops when cutting	<ol style="list-style-type: none">1. Wait for automatic cut out to reset. Use lighter cutting action.2. Check blade and remove any debris.3. Charge battery.
LEDs show solid red	<ol style="list-style-type: none">1. The grass trimmer has jammed.2. Check blade and remove any debris.

Product Support

If these initial tips don't solve your problem, we have various other ways to help.

Visit: www.gtech.co.uk/support



Online



Live chat support



support@gtech.co.uk



How to Videos

GRASS TRIMMER TECHNICAL SPECIFICATION

Cutting width	23cm
No load speed	9000min ⁻¹
Battery	18V DC 2000mAh Li-ion
Charging period	4 hours
Battery charger output	21.6V $\overline{=}$ 0.5A
Battery charger input	100-240V \sim 50/60Hz
Battery charger type	K12V216050B
Measure sound power level, LwA	88.75 dB(A) K = 3.56 dB(A)
Guaranteed sound power level, LwA,d	96dB (A)
Weight	1.75kg
Vibration	4.390 m/s ² K = 1.5m/s ²

Environmental and Product Recycling

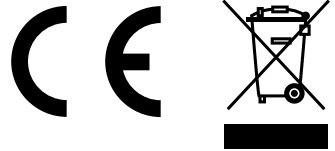
The  symbol indicates that this product is covered by legislation for waste electrical and electronic products (EN2012/19/EU)

When the product has reached the end of its life please do not dispose of it with general household waste. Consider the environment and take it to a recognised recycling facility.

The product contains a Li-Ion battery which should not be disposed of with general household waste. The battery should be disposed of properly with the product at a recycling facility.

Call your local council, civic amenity site, or recycling centre for information on the disposal and recycling of electrical products.

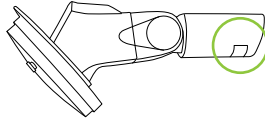
Alternatively visit www.recycle-more.co.uk for advice on recycling and to find your nearest recycling facilities.



WARRANTY – REGISTRATION

Visit www.gtech.co.uk/warrantyregistration to register your product to ensure that we have all the information required to provide you with quick and efficient support.

You will need your product's serial code.



If you purchased directly from Gtech your details are already registered and your 2 year warranty will start automatically.

If you purchased from an authorised Gtech retailer, please register your warranty within 3 months and you will need to provide proof of purchase to support any claim against your warranty.

WARRANTY – TERMS AND CONDITIONS

Your Gtech Grass Trimmer is guaranteed against material or manufacturing faults for 2 years from the date of purchase, subject to the following terms and conditions:

WHAT ISN'T COVERED

Gtech does not guarantee the repair or replacement of the product as a result of:

- Normal wear and tear.
- Accidental damage, faults caused by negligent use or care, misuse, neglect, careless operation or handling of the grass trimmer which is not in accordance with the operating manual.
- Use of the grass trimmer for anything other than normal domestic garden purpose.
- Use of parts and accessories which are not Gtech genuine components.
- Faulty installation (except where installed by Gtech).
- If it is modified in any way.
- Repairs or alterations carried out by parties other than Gtech or its authorised agents.
- If you are in doubt as to what is covered by your warranty, please call the Gtech Customer Care Helpline on 01905 345 891.

SUMMARY

- The guarantee becomes effective at the date of purchase (or the date of delivery if this is later).
- Battery is covered by this guarantee.
- You must provide proof of delivery/purchase before any work can be carried out on the hedge trimmer. Without this proof, any work carried out will be chargeable. Please keep your receipt or delivery note.
- All work will be carried out by Gtech or its authorised agents.
- Any parts that are replaced will become the property of Gtech.
- The repair or replacement of your hedge trimmer is under guarantee and will not extend the warranty period.
- The guarantee provides benefits which are additional to and do not affect your statutory rights as a consumer.

EC Declaration of Conformity

We, manufacturer/importer

Grey Technology Ltd
Brindley Road
Warndon
Worcester
WR4 9FB

declare that the product

Cordless Grass Trimmer

complies with the essential health and safety requirements of the following directives:

2014/30/EU - EMC Directive.
2006/42/EC - Machinery Directive
2000/14/EC amended by 2005/88/EC
- Noise emission in the environment by equipment for use outdoors Directive.
- Conformity assessment procedure as per ANNEX VI.
- Measured Sound Power Level = 88.75 dB(A) K = 3.56dB(A)
- Declared Guaranteed Sound Power Level = 96 dB(A)
- Notified Body for EC Directive 2000/14/EC amended by 2005/88/EC
SNCH, 11 rue de Luxembourg L-5230 Sandweiler

2011/65/EU - RoHS directive

Technical documentation holder: Grey Technology Ltd, WR4 9FB

Standards and technical specifications referred to:

EN 60335-1
EN 50636-2-91
EN55014-1
EN55014-2
EN61000-3-2
EN61000-3-3

Dokumentationsbevollmächtigter :
Authorized person for the compilation
of the technical documentation:

Andrew Boddy

Herstellerunterschrift/Datum:
Authorized Signature/Date/ Place:



25.2.19 Worcester, UK

Angaben zum Unterzeichner:
Title of Signatory:

Technical Manager



Grey Technology Limited

Brindley Road, Warndon, Worcester WR4 9FB

email: support@gtech.co.uk

telephone: 01905 345891

www.gtech.co.uk