

Gtech
Lithium Power Sweeper

Model number:
SW22

OPERATING MANUAL

IMPORTANT SAFEGUARDS:



**IMPORTANT: READ ALL INSTRUCTIONS BEFORE USE.
RETAIN INSTRUCTIONS FOR FUTURE REFERENCE.**



Do not use in rain or leave outdoors whilst raining.



WARNING: Basic safety precautions should always be observed when using an electrical appliance, including the following to reduce the risk of fire, electrical shock, or injury:

Personal Safety:

- Store indoors in a dry place out of the reach of children.
- Always use responsibly. This appliance can be used by children aged from 8 years and above and persons with reduced physical, sensory or mental capabilities or lack of experience and knowledge if they have been given supervision or instruction concerning use of the appliance in a safe way and understand the hazards involved.
- Don't let children play with the appliance; supervise children using or maintaining the appliance.
- Use only manufacturer's recommended attachments as described in this manual; misuse or use of any accessory or attachment other than those recommended, may present a risk of personal injury.
- Take extra care when cleaning stairs.
- Keep the appliance and accessories away from hot surfaces.
- Particularly keep hair away from openings and moving parts.

Electrical safety:

- Only use batteries and chargers supplied by Gtech.
- Never modify the charger in any way.
- The charger must only be used for UK mains supply.
A charger that is suitable for one type of battery pack may create a risk of fire when used with another battery pack; never use the charger with another appliance or attempt to charge this product with another charger.
- Before use, check the charger cord for signs of damage or ageing.
A damaged or entangled charger cord increases the risk of fire and electric shock.
- Do not abuse the charger cord.
- Never carry the charger by the cord.
- Do not pull the cord to disconnect from a socket; grasp the plug and pull to disconnect.
- Don't wrap the cord around the charger when storing.
- Keep the charger cord away from hot surfaces and sharp edges.
- The supply cord cannot be replaced.
If the cord is damaged the charger should be discarded and replaced.
- Do not handle the charger or the appliance with wet hands.

- Do not store or charge the appliance outdoors.
- Unplug the charger before removing the battery, cleaning or maintaining the appliance.

Battery safety:

- This appliance includes Li-ion batteries; **do not incinerate batteries or expose to high temperatures**, as they may explode.
- Liquid ejected from the battery may cause irritation or burns.
- In an emergency situation contact professional help immediately.
- Leaks from the battery cells can occur under extreme conditions. Do not touch any liquid that leaks from the battery. If the liquid gets on your skin wash immediately with soap and water. If the liquid gets into your eyes, flush them immediately with clean water for a minimum of 10 minutes and seek medical attention. Use gloves to dispose of the battery immediately in accordance with local regulations.
- Shorting the battery terminals may cause burns or fire.
- Store battery away from metal objects that could connect the terminals.
- When you dispose of the appliance remove the battery and dispose of the battery safely in accordance with local regulations.

Service:

- Before using the appliance and after any impact, check for signs of wear or damage and repair as necessary.
- Do not use the appliance if any part is damaged or defective.
- Repairs should be carried out by a service agent or a suitably qualified person in accordance with relevant safety regulations. Repairs by unqualified persons could be dangerous.
- Never modify the appliance in any way as this may increase the risk of personal injury.
- Only use replacement parts or accessories provided or recommended by Gtech.

Intended use:

- This appliance has been designed for domestic dry sweeping only.
- Do not use on wet surfaces.
- Do not pick up anything that is flammable, burning or smoking.
- Use only as described in this manual.
- Don't use on concrete, tarmacadam or other rough surfaces.
- The sweeper has a constantly rotating brush bar. Never leave the cleaning head in one spot for an extended period of time as this may damage the floor surface.

WARNING:

- **Do not use water, solvents, or polishes to clean the outside of the appliance; wipe clean with a dry cloth.**
- **Never immerse the unit in water and do not clean in a dish washer.**

Thank you for choosing a Gtech Power Sweeper

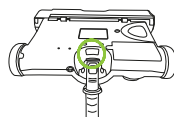
"I started Gtech to create sensible, easy to use products, which do a great job. Your opinion is important to us and we will use your feedback to improve our products and services and let other people know what it's like to be part of the Gtech family."

Nick Grey – Inventor, Owner of Gtech

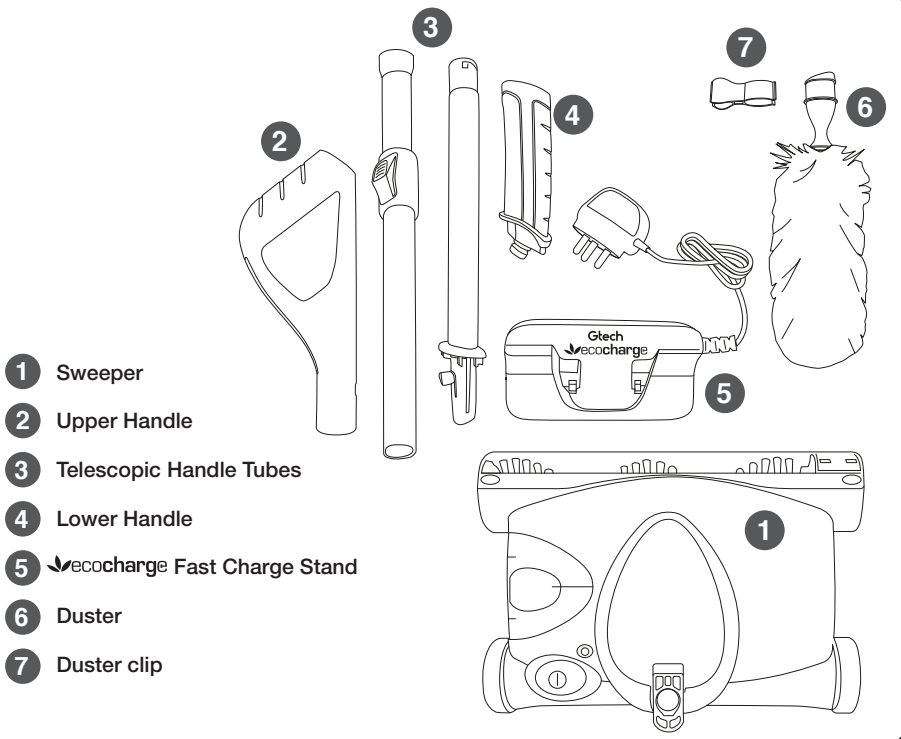
Please take the time to write a review of the Gtech Sweeper by visiting www.gtech.co.uk/product-reviews or if you didn't purchase directly from Gtech please leave a review with the retailer.

Make a note of your product serial number code for future reference. You can find this on the underside of item **1**

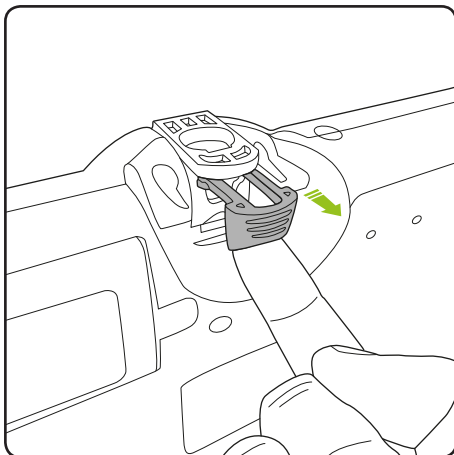
-- -- -- -- ~
-- -- -- -- ~
-- -- -- -- ~
-- ~ -- -- --



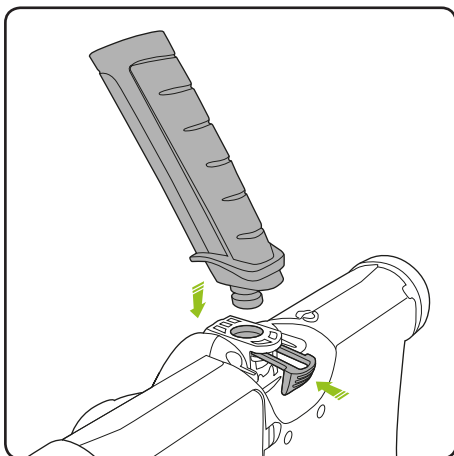
What's in the box



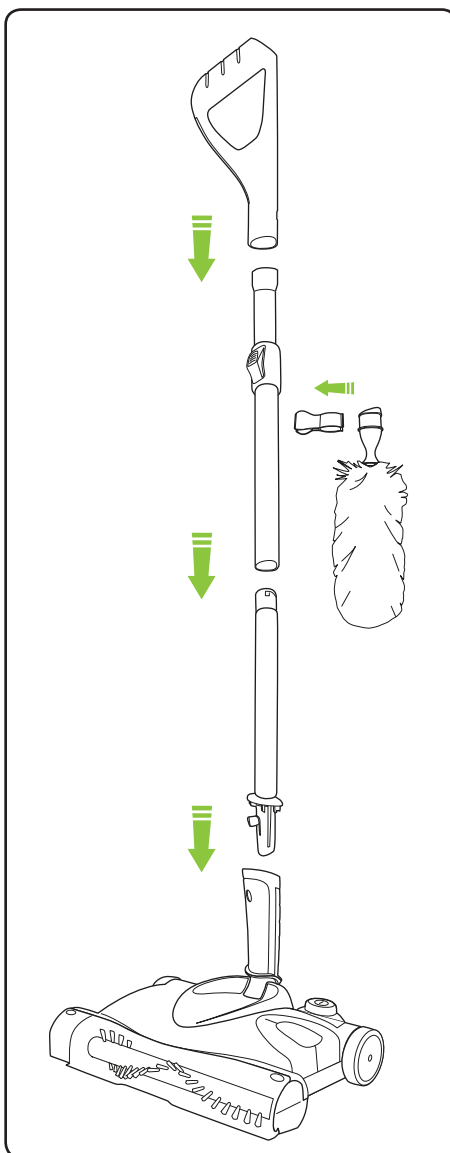
Assembly



To assemble the lower handle, pull out the locking clip.

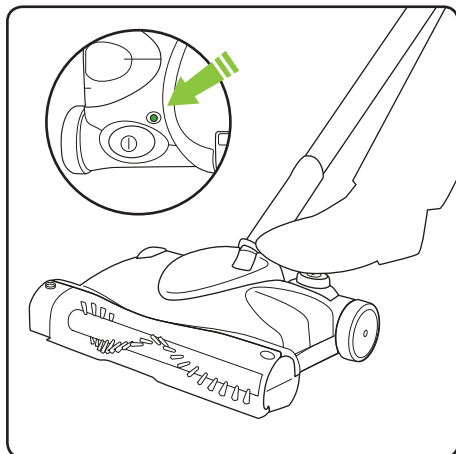


Place the lower handle into the socket. Push the locking clip back into place. Push handle forward.



The three parts of the telescopic handle also click into place. The duster can be clipped onto the back of the handle.

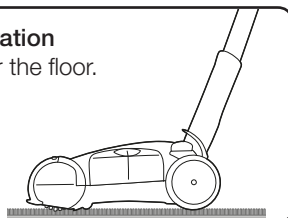
Operation



Pull back the handle and press the “on” button with your foot. When running, the light shows green for a full charge, orange for 20% charge and red for 10%. When the sweeper needs recharging the light will flash red and the sweeper will stop.

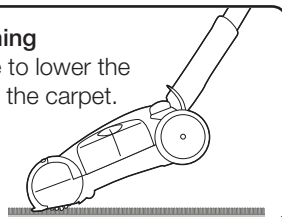
Normal operation

Push flat over the floor.

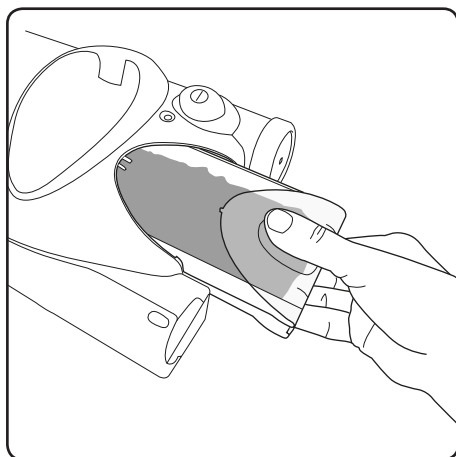


Deeper cleaning

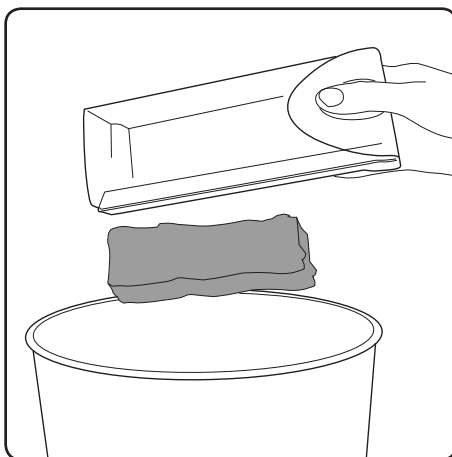
Lift the handle to lower the brush bar into the carpet.



Emptying the bin

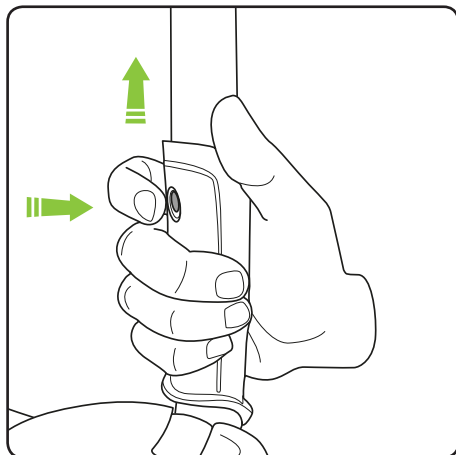


Remove the dust tray by pinching the window slightly and pulling it out.

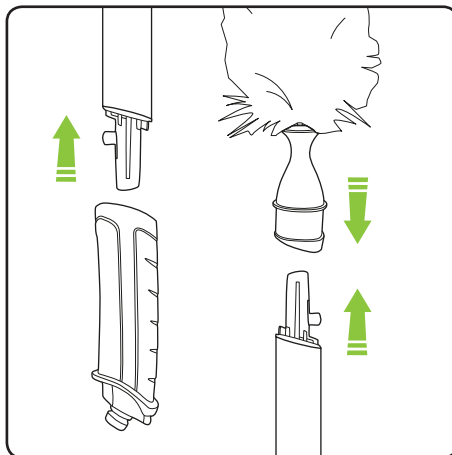


Tip the dirt into the bin. If you need to you can wipe the tray clean with a dry cloth.

Removing telescopic handle and using duster

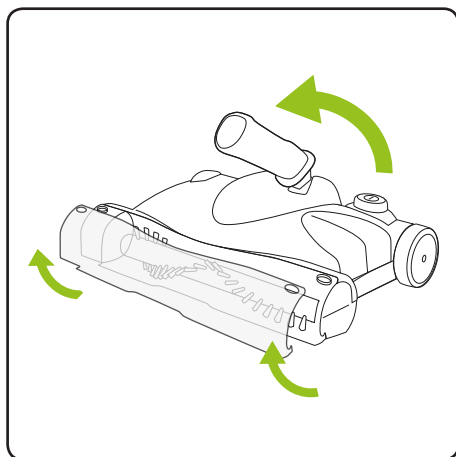


Remove the telescopic handle by pressing the button at the front of the lower handle and pulling the tube out.

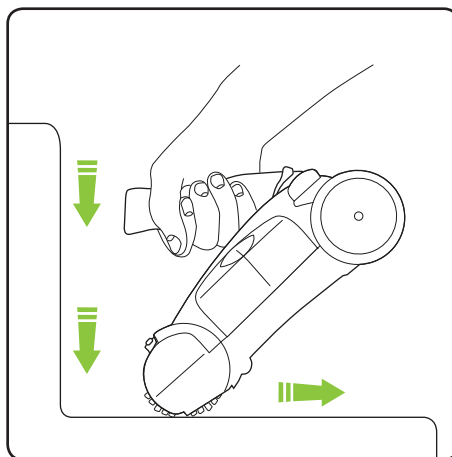


The telescopic handle can now be attached to the duster.

Handheld use and stair cleaning

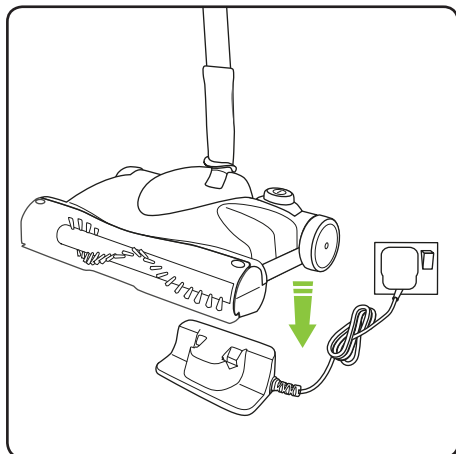


Remove the visor by unclipping the bottom outer edges at the same time then lifting off. Push lower handle fully forward.

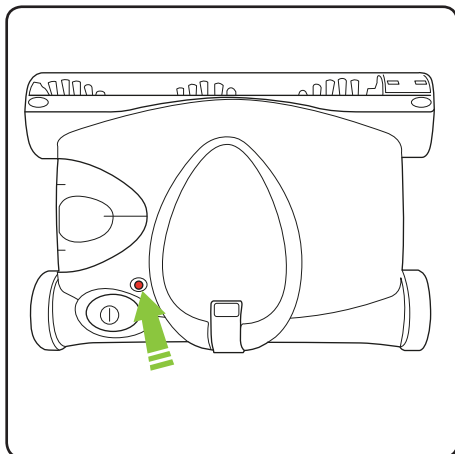


Use on stairs, starting at the top and front of each step then moving down and towards you.

Recharging

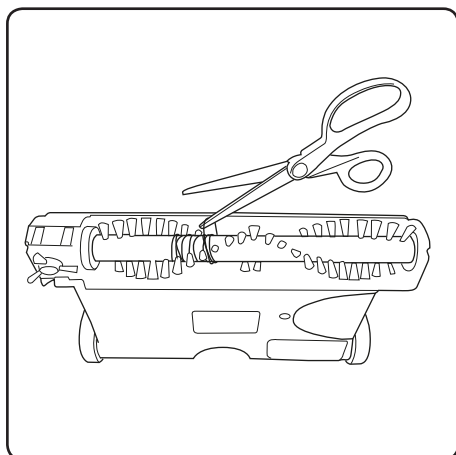


Plug in the **ecocharge** charge stand and lower the sweeper onto it so that the terminals connect at the back.



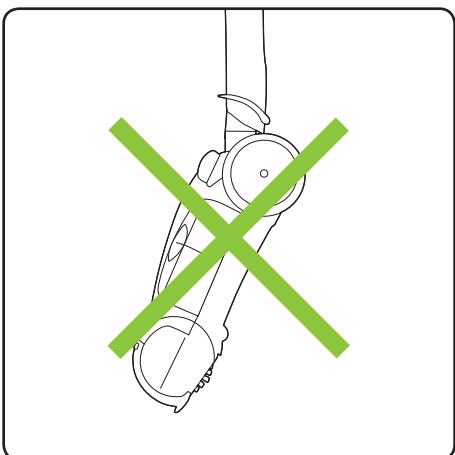
The LED shows red when charging starts, yellow when partially charged and green when fully charged. This takes around 3 hours. Once the battery is fully charged, switch the ecocharge stand off at the mains. This will optimise the battery life.

Clearing the brush bar



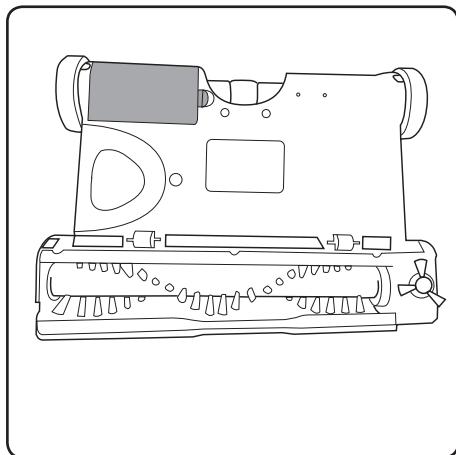
From time to time you may need to remove hair and thread from the brush bar. Take off visor and use a pair of scissors to remove the hair.

Carrying

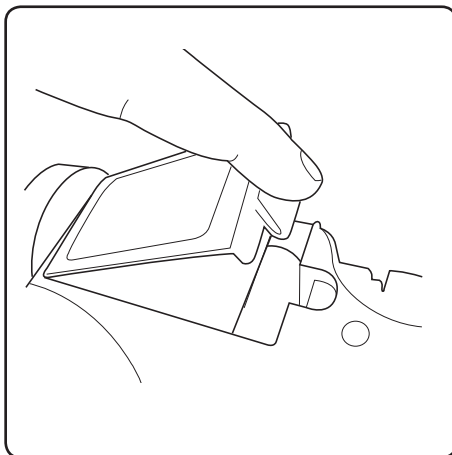


Try to avoid carrying the sweeper 'nose down' as you risk spilling dirt from the dust tray.

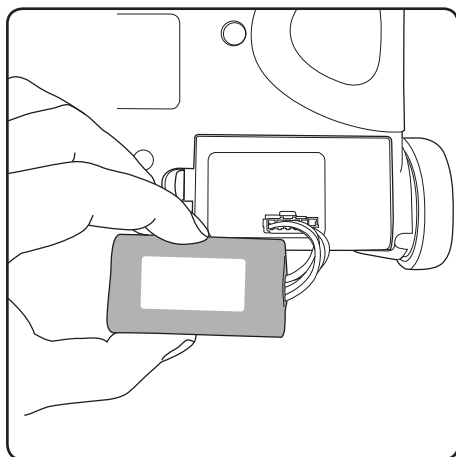
Changing the battery



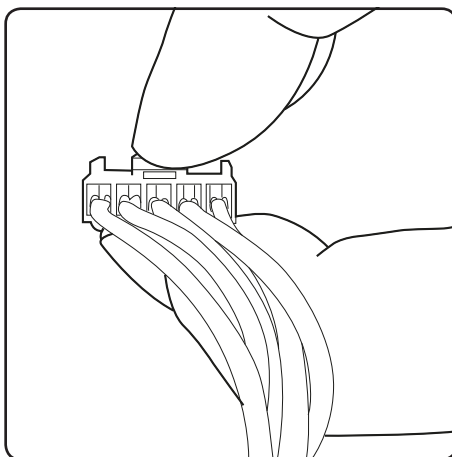
Locate the battery cover.



Lift off the battery cover.



Lift out the battery pack.



Remove the pad from the battery compartment then, pinching the clip, pull the 5-pin connector from the sweeper. Connect new battery, then replace pad and place new battery into compartment.

Product Care

Your Gtech sweeper doesn't need much maintenance: empty the dust tray, remove hair and fibre from the brush bar and edge wheel and charge the battery. Wipe it with a dry cloth if it gets dirty, including in and around the bin. Never wash it with liquid or run it under a tap. Avoid cleaning over rug tassels or frayed carpets as this will tangle the brush bar. The battery, drive belt, brush bar and side brush are all replaceable items. If you find you ever need to replace these items there is an FAQ section on our website at www.gtech.co.uk



The product can be charged and stored on the ecocharge stand. Once the battery has fully charged, switch the ecocharge stand off at the mains supply. This will optimise the battery life.

Troubleshooting

Sweeper is not cleaning well	<ol style="list-style-type: none">1. Empty the bin.2. Remove any build-up of hair from brush bar and edge wheel.
Sweeper has stopped or won't work	<ol style="list-style-type: none">1. Fully recharge for 3 hours.

Product Support

If these initial tips don't solve your problem, we have various other ways to help.
Visit: www.gtech.co.uk/support



Online



Live chat support



support@gtech.co.uk

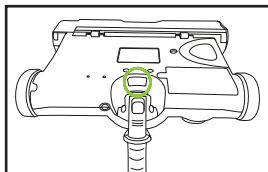


How to Videos

WARRANTY – REGISTRATION

Visit www.gtech.co.uk/warrantyregistration to register your product to ensure that we have all the information required to provide you with quick and efficient support.

You will need your product's serial code.



If you purchased directly from Gtech your details are already registered and your 1 year warranty will start automatically.

If you purchased from an authorised Gtech retailer, please register your warranty within 3 months and you will need to provide proof of purchase to support any claim against your warranty.

WARRANTY – TERMS AND CONDITIONS

Your Gtech Sweeper is guaranteed against material or manufacturing faults for 1 year from the date of purchase, subject to the following terms and conditions:

WHAT ISN'T COVERED

Gtech does not guarantee the repair or replacement of a product as a result of:

- Normal wear and tear (e.g. brush bar and edge brush)
- Accidental damage, faults caused by negligent use or care, misuse, neglect, careless operation or handling of the vacuum cleaner which is not in accordance with Gtech Sweeper operating manual.
- Use of the Sweeper for anything other than the normal domestic household purposes.
- Use of parts and accessories which are not Gtech genuine components.
- Faulty installation (except where installed by Gtech)
- Repairs or alterations carried out by parties other than Gtech or its authorised agents.
- If you are in doubt as to what is covered by your guarantee, please call the Gtech Customer Care Helpline on 01905 345 891.


SUMMARY

- The guarantee becomes effective at the date of purchase (or the date of delivery if this is later).
- You must provide proof of delivery/purchase before any work can be carried out on the Sweeper. Without this proof, any work carried out will be chargeable. Please keep your receipt or delivery note.
- All work will be carried out by Gtech or its authorised agents.
- Any parts which are replaced will become the property of Gtech.
- The repair or replacement of your Sweeper is under guarantee and will not extend the period of guarantee.

SW22 TECHNICAL SPECIFICATION

Unit operating cycle with full battery	up to 120 mins (dependent on floor surface)
Battery type	Lithium-ion
Battery voltage	7.4V
Charging period for fully discharged battery	3 hours
Battery charger output	10V DC, 1000mA
Battery charger model	GTECH-100100
Sound Level	75db (A)
Weight	1.4kg



The  symbol indicates that this product is covered by legislation for waste electrical and electronic products (EN2002/96/EC). When the sweeper has reached the end of its life, it and the Li-ion battery it contains should not be disposed of with general household waste. The battery should be removed from the sweeper and both should then be disposed of properly at a recognised recycling facility.

Call your local council, civic amenity site, or recycling centre for information on the disposal and recycling of electrical products. Alternatively visit **www.recycle-more.co.uk** for advice on recycling and to find your nearest recycling facilities.



WARNING: Only use the charger supplied with the product.

Using another charger may damage the product and the battery and will invalidate your guarantee.

FOR HOUSEHOLD USE ONLY

Notes

Notes

Notes



Grey Technology Limited

Brindley Road, Warndon, Worcester WR4 9FB

email: support@gtech.co.uk

telephone: 01905 345891

www.gtech.co.uk

CPN2382